

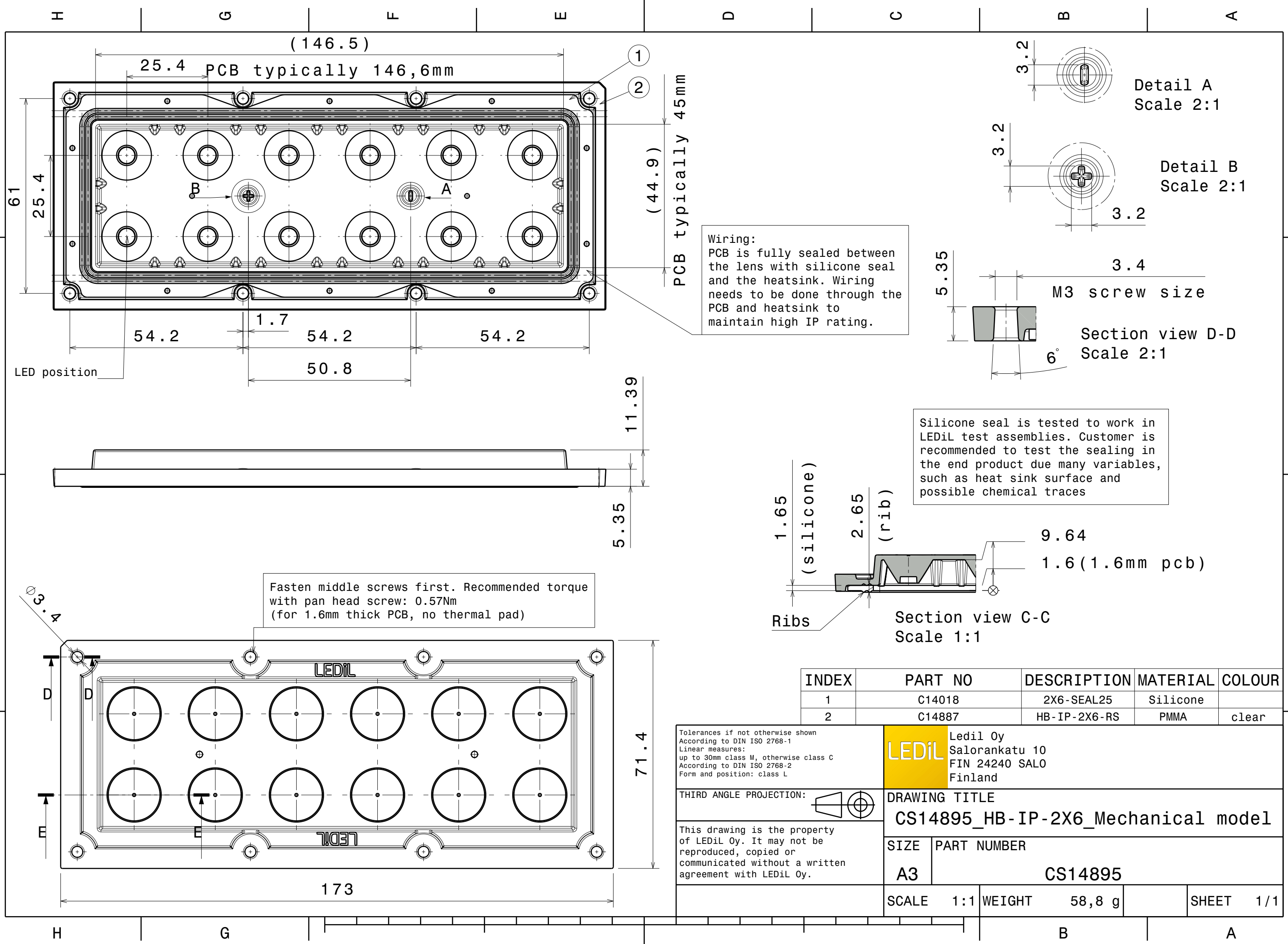
## DETAILS

Product Number	CS14895_HB-IP-2X6-RS
Family	High Bay
Type	Assembly
Color	clear
Diameter	173 + 71,4 mm
Height	11,39 mm
Style	rectang
Optic Material	PMMA
Holder Material	
Fastening	screw, pin
Status	ready
ROHS Compliant	Yes
Date Updated	17/12/2015

## OPTICAL PROPERTIES

LED	Viewing	Light	Effi-		Connector
	Angle	Beam	ciency	cd/lm	
Oslon Square Gen3	sim: 12	Real spot	sim: 90 %	sim: 14.000	-
XP-G2	13 deg	Real spot	94 %	10.600	-
XM-L	21 deg	Real spot	94 %	5.100	-

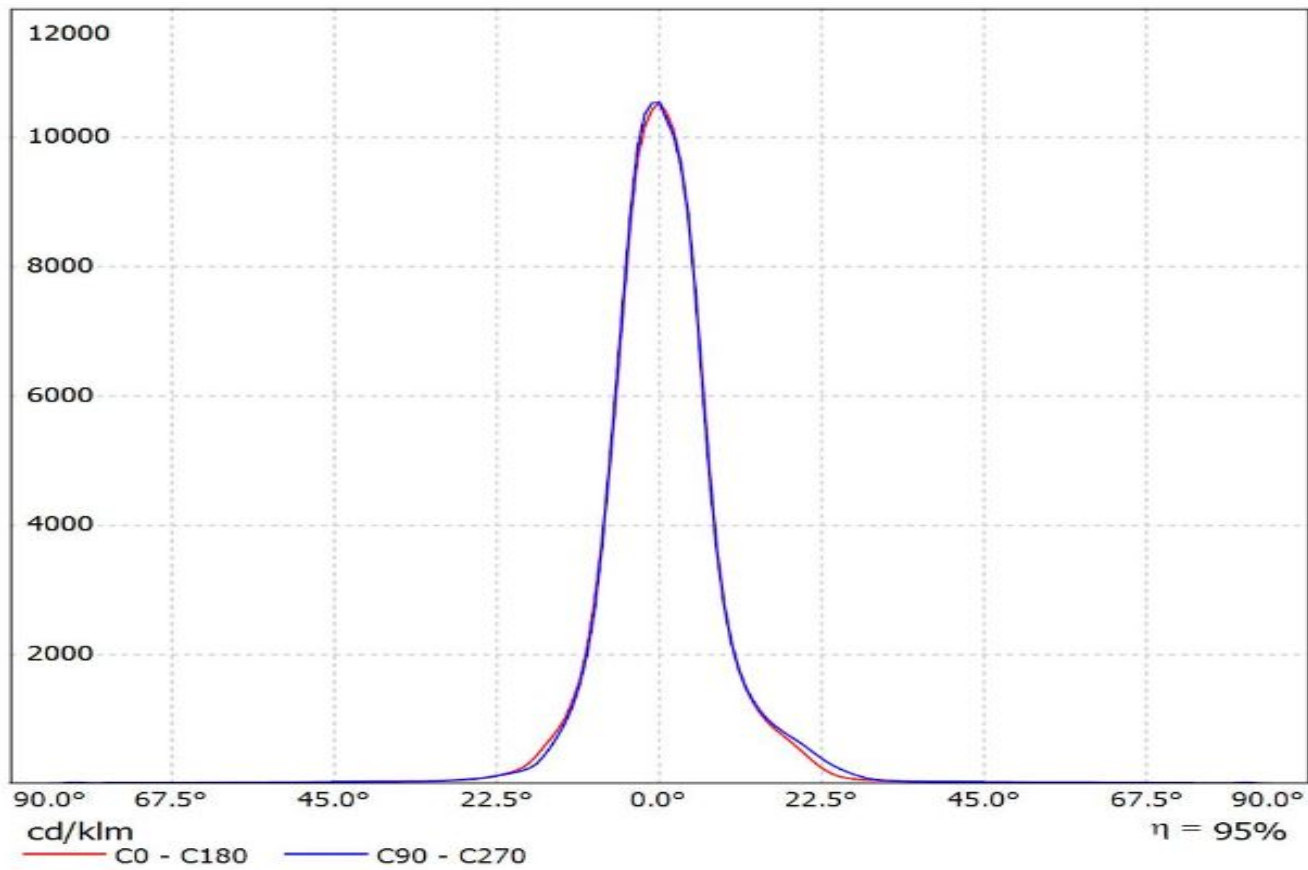




INDEX	PART NO	DESCRIPTION	MATERIAL	COLOUR
1	C14018	2X6-SEAL25	Silicone	
2	C14887	HB-IP-2X6-RS	PMMA	clear

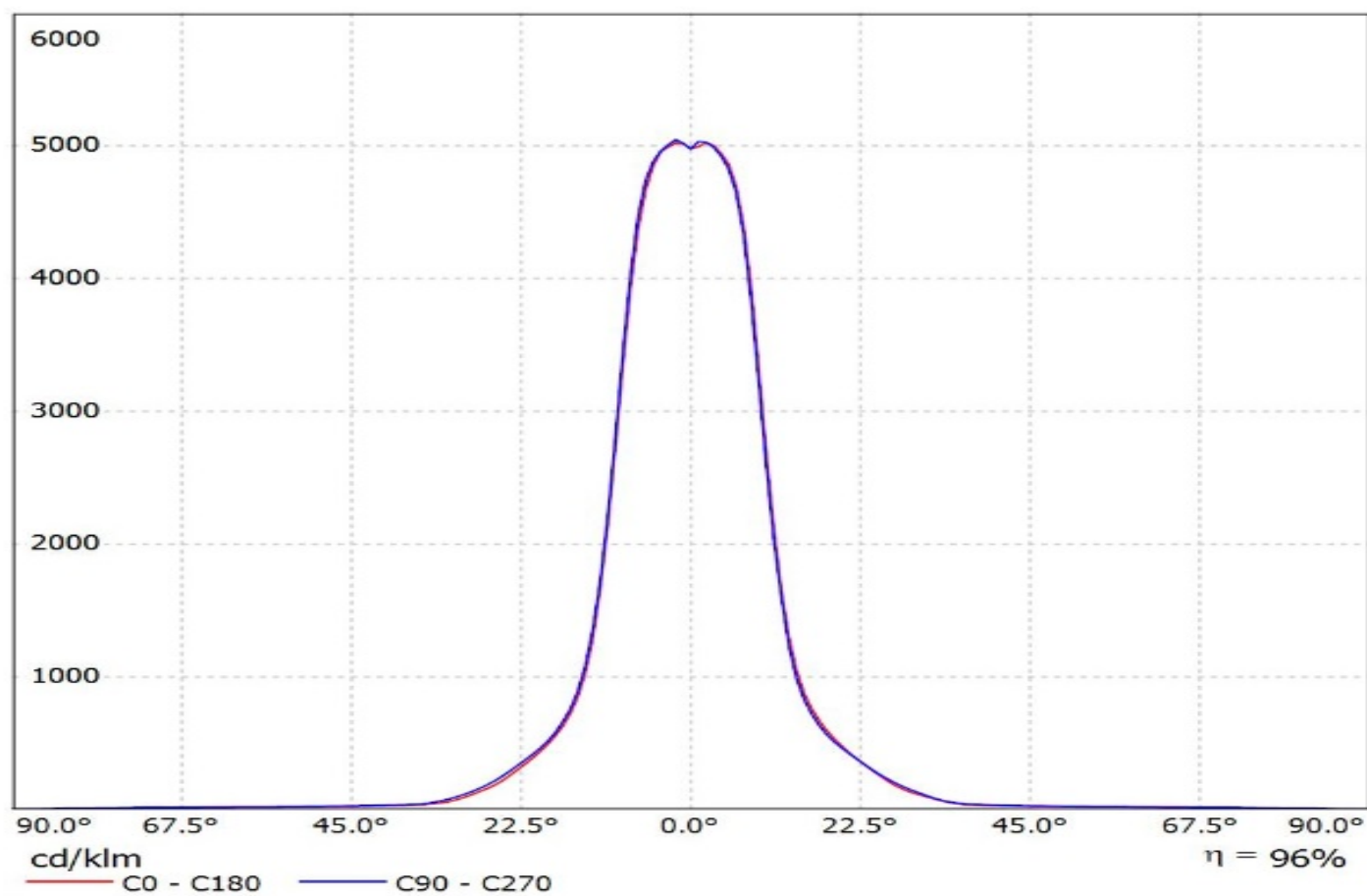
Tolerances if not otherwise shown According to DIN ISO 2768-1 Linear measures: up to 30mm class M, otherwise class C According to DIN ISO 2768-2 Form and position: class L		<b>LEDiL</b> Ledil Oy Salorankatu 10 FIN 24240 SALO Finland	
THIRD ANGLE PROJECTION:		DRAWING TITLE	
This drawing is the property of LEDiL Oy. It may not be reproduced, copied or communicated without a written agreement with LEDiL Oy.		CS14895_HB-IP-2X6_Mechanical model	
		SIZE	PART NUMBER
		A3	CS14895
SCALE		1:1	WEIGHT
			58,8 g
		SHEET	1/1

Luminaire: LEDiL Oy CS14895\_HB-IP-2X6-RS  
Lamps: 1 x Cree\_XP-G2\_1235.27lm@250mA\_P=8.6001W\_I=0.25A

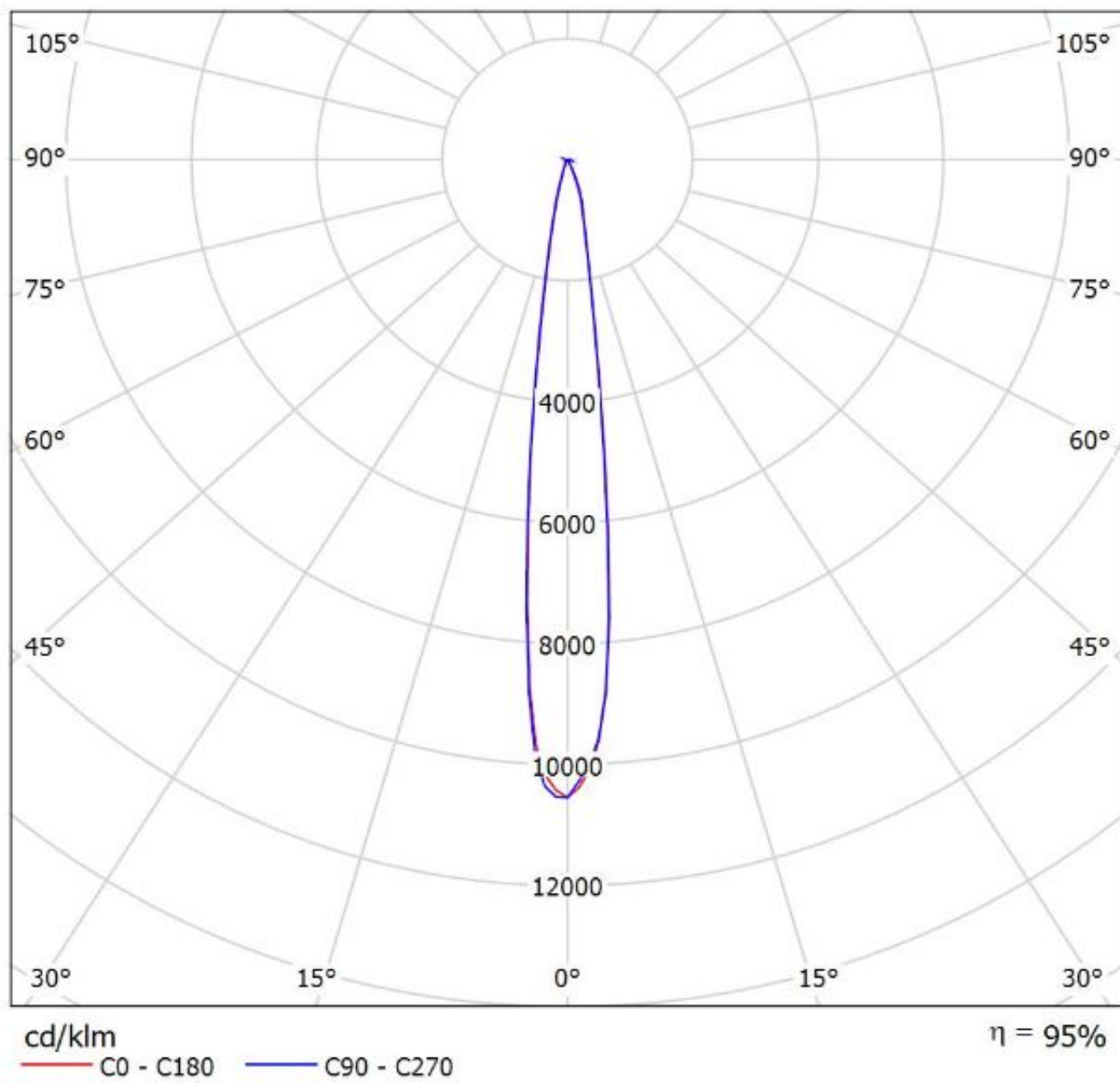


Luminaire: LEDiL Oy CS14895\_HB-IP-2X6-RS\_(XM-L)

Lamps: 1 x Cree\_XM-L\_(XMLAWT-00-0000-000LT20E7)\_980.828lm@250mA\_P=8.1232W\_I=0.250A

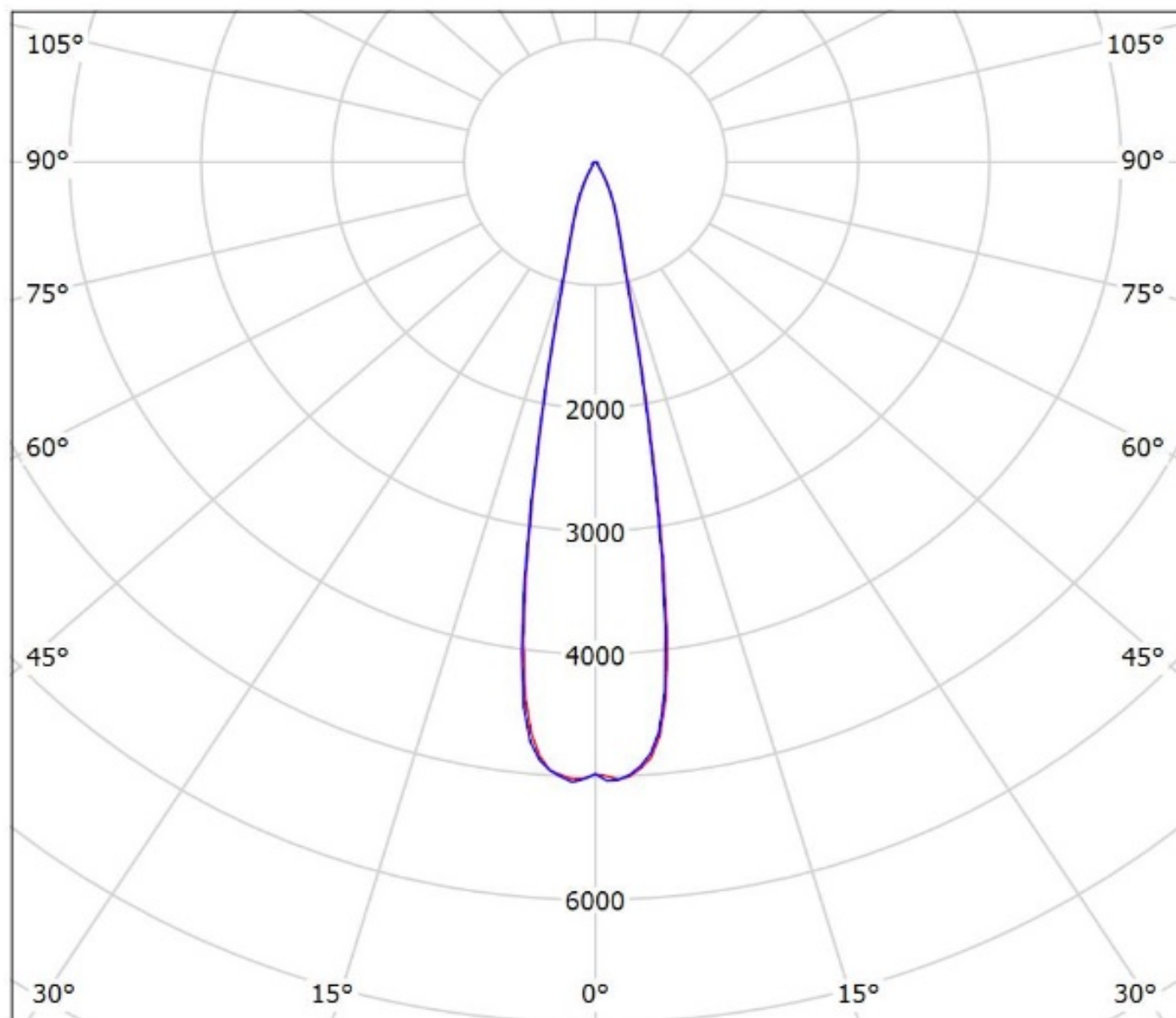


Lamps: 1 x Cree\_XP-G2\_1235.27lm@250mA\_P=8.6001W\_I=0.25A



Luminaire: LEDiL Oy CS14895\_HB-IP-2X6-RS\_(XM-L)

Lamps: 1 x Cree\_XM-L\_(XMLAWT-00-0000-000LT20E7)\_980.828lm@250mA\_P=8.1232W\_I=0.250A



cd/klm

— C0 - C180

— C90 - C270

$\eta = 96\%$

**NOTE: The typical divergence will be changed by different color, chip size and chip position tolerance. The typical total divergence is the full angle measured where the luminous intensity is half of the peak value.**