



PRODUCT DATASHEET

Strada-T series

last update 8/3/2014

DETAILS

Ordering Number	2FA11992_STRADA-T-DN-EP
Family	Strada-T
Type	Assembly
Color	clear
Diameter	19.8 x 15.5 mm
Height	8.75 mm
Style	rectang
Optic Material	PMMA
Holder Material	
Fastening	screw, tape
Status	ready
ROHS Compliant	Yes
Date Updated	8/03/2014



OPTICAL PROPERTIES

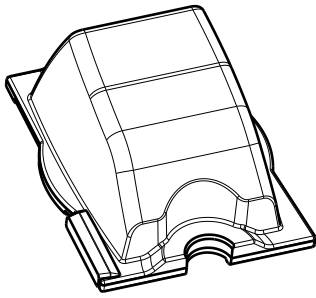
LED	Viewing Angle	Light Beam	Efficiency	cd/lm
LUXEON A	(simulated)		-	-
XP-E	Asymmetric degrees		92 %	(simulated) 0.000
XP-G	Asymmetric degrees		92 %	-
Double Dome (GM2BB)	Asymmetric degrees		-	-
Z5	Asymmetric degrees		-	-

D

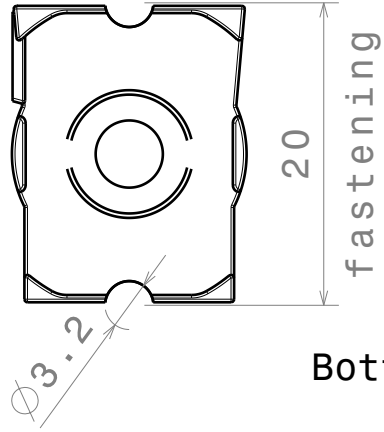
C

B

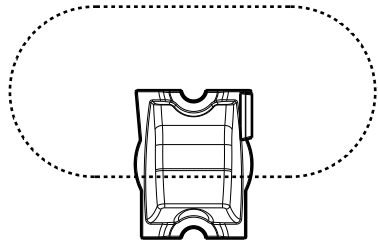
A



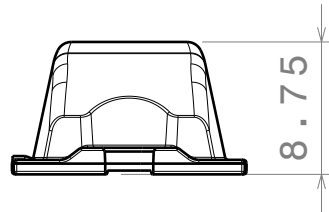
Isometric view



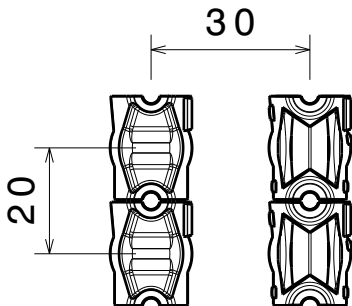
Bottom view



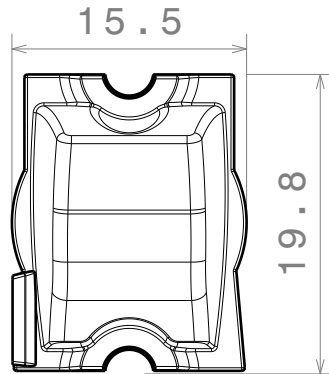
Beam direction



Front view



Strada lens arrangement recommendation



Top view

MATERIALS
 Lens: PMMA
 Tape(optional): PU Foam

Part no. with tape fastening: CA11992_Strada-T-DN

This drawing is our property.
 It can't be reproduced
 or communicated without
 our written agreement.



Ledil Oy
 Tehdaskatu 13
 FIN-24100 SALO
 Finland

DRAWING TITLE

Datasheet Strada-T-DN-EP Lens

DRAWN BY

pv

DATE

05.09.2011

CHECKED BY

j1

DATE

5.9.2011

DESIGNED BY

hh

DATE

14.05.2010

SIZE

A4

DRAWING NUMBER

C11896

REV

1

SCALE

2:1

WEIGHT (g)

SHEET

1/1

D

A

4

4

3

3

2

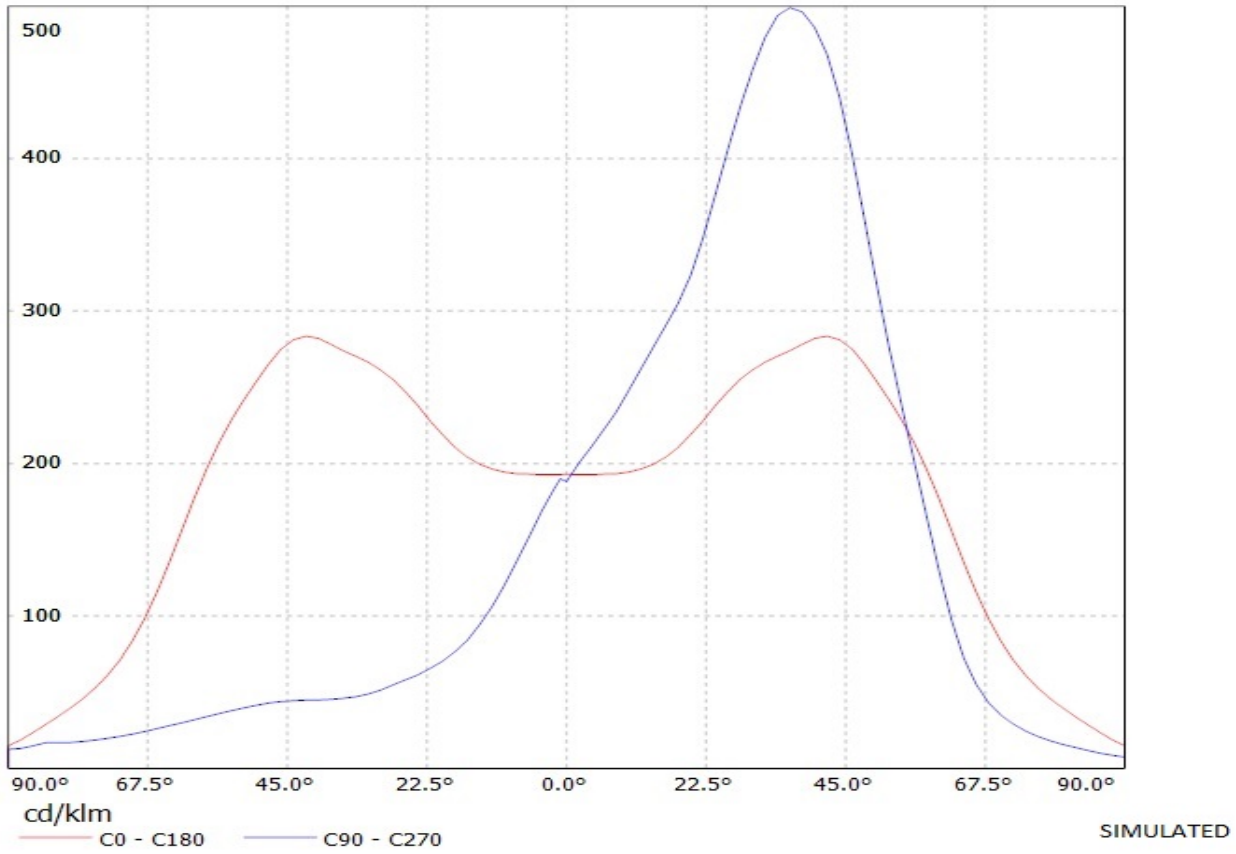
2

1

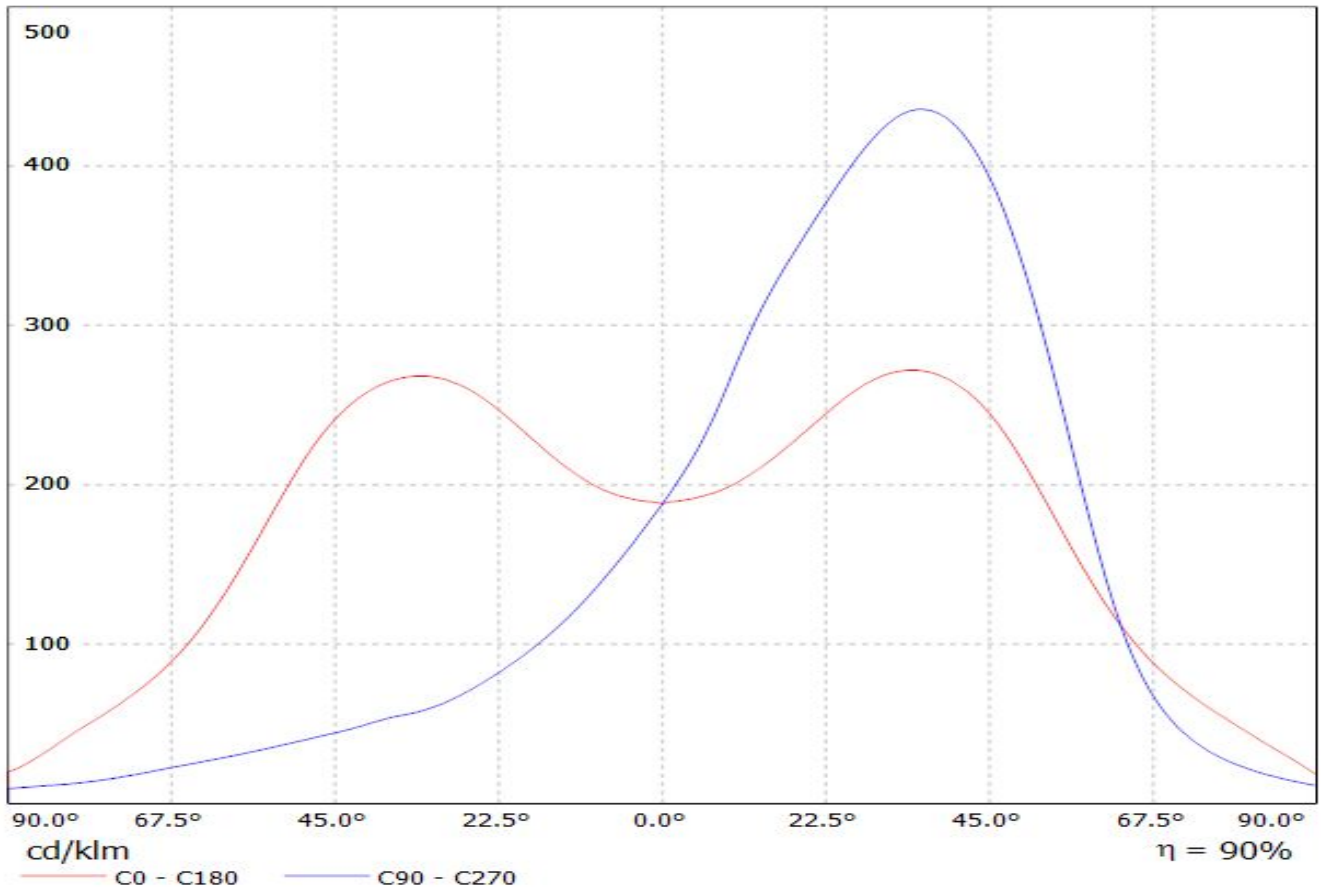
1

Ledil Oy C11415_Strada-T-DN-XP C11415_Strada-T-DN-XP / LDC (Linear)

Luminaire: Ledil Oy C11415_Strada-T-DN-XP C11415_Strada-T-DN-XP
Lamps: 1 x Cree XP-E (White)



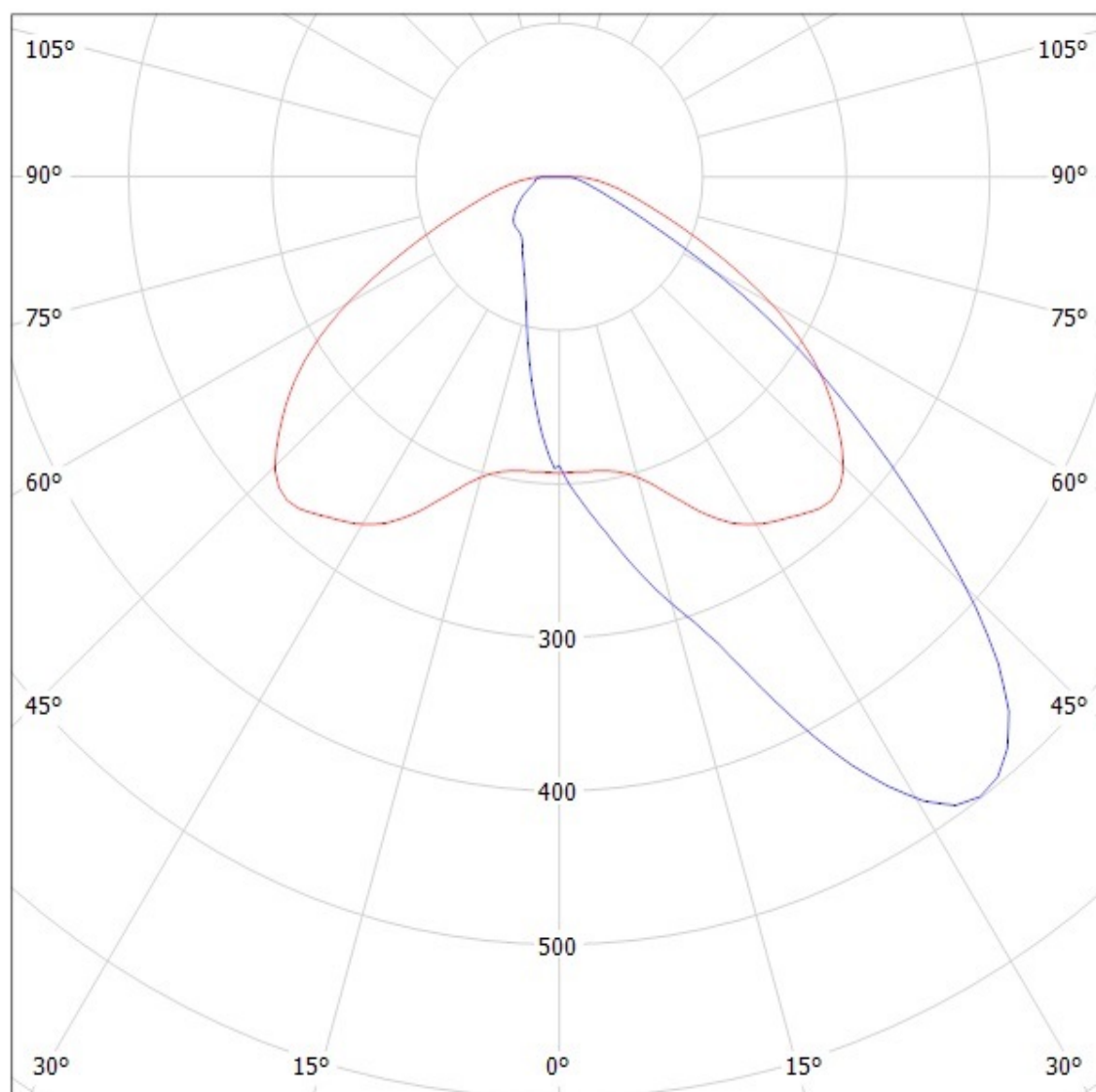
Luminaire: LEDiL Oy 2FA11992_STRADA-T-DN-EP_(LG3535) Eff. 89,1%
Lamps: 1 x LG Ceramic 3535 PKG (95lm@250mA)



Ledil Oy C11415_Strada-T-DN-XP C11415_Strada-T-DN-XP / LDC (Polar)

Luminaire: Ledil Oy C11415_Strada-T-DN-XP C11415_Strada-T-DN-XP

Lamps: 1 x Cree XP-E (White)



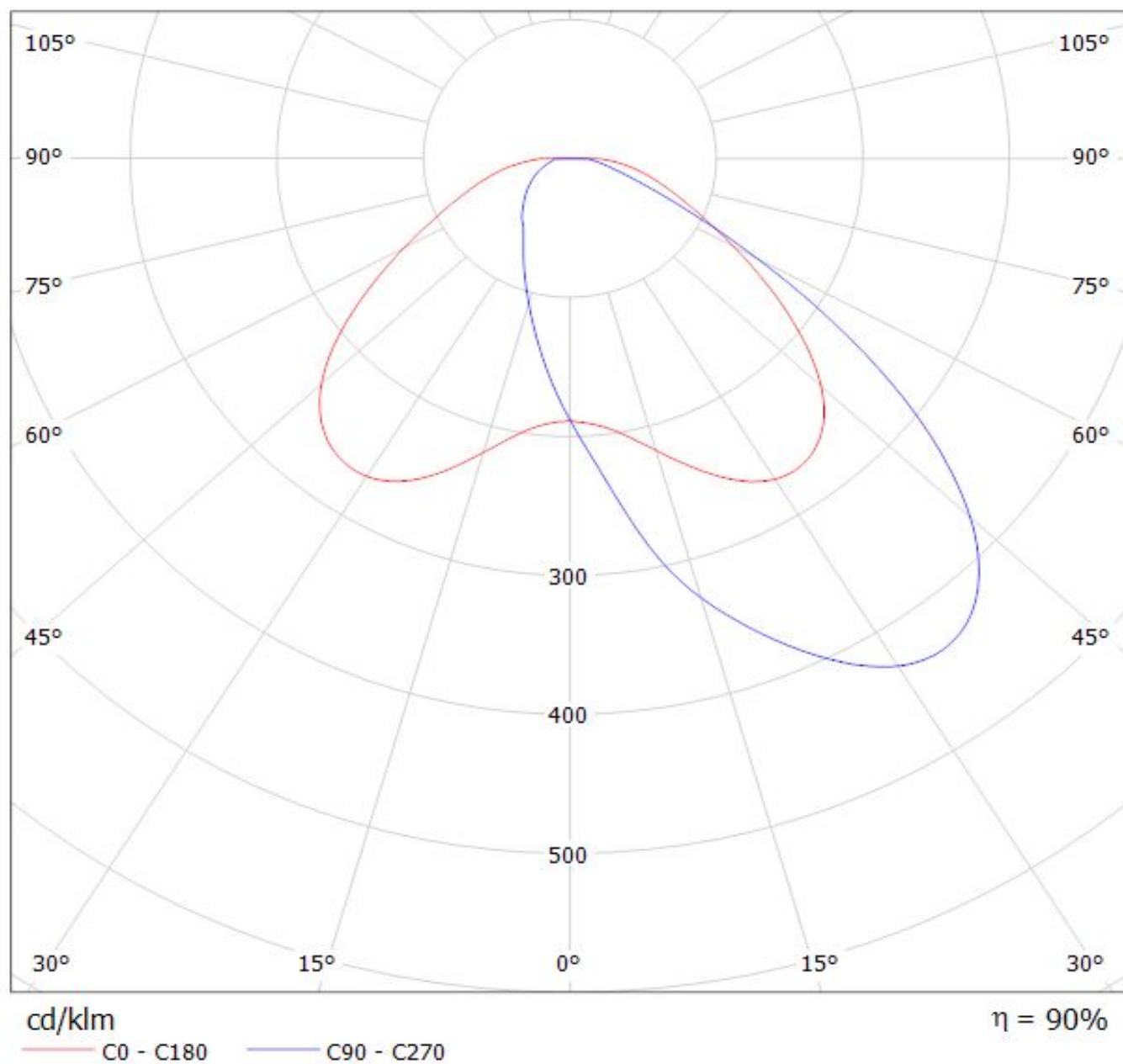
cd/klm

— C0 - C180

— C90 - C270

SIMULATED

Luminaire: LEDiL Oy 2FA11992_STRADA-T-DN-EP_(LG3535) Eff. 89,1%
Lamps: 1 x LG Ceramic 3535 PKG (95lm@250mA)



NOTE: The typical divergence will be changed by different color, chip size and chip position tolerance. The typical total divergence is the full angle measured where the luminous intensity is half of the peak value.