

DETAILS

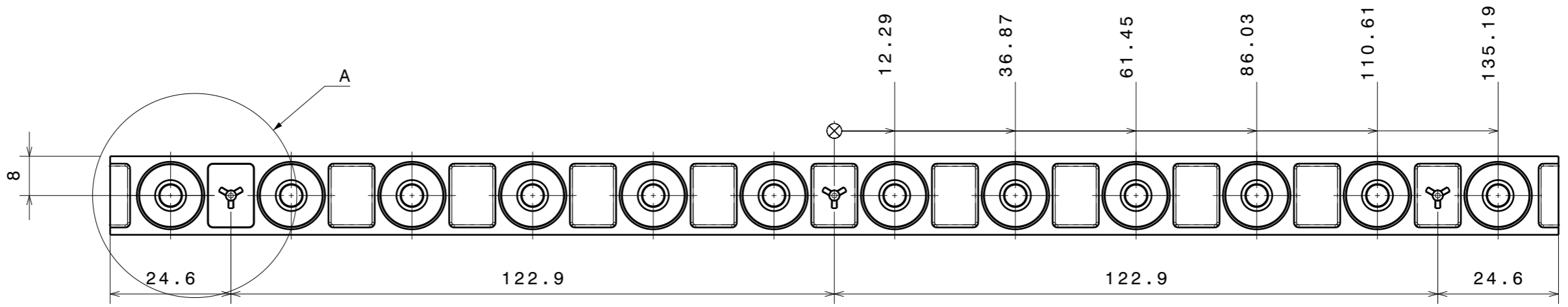
Product Number	C13871_VANESSA-B-O
Family	Vanessa
Type	Lens
Color	clear
Diameter	mm
Height	8 mm
Style	rectang
Optic Material	PMMA
Holder Material	
Fastening	
Status	ready
ROHS Compliant	Yes
Date Updated	9/05/2014



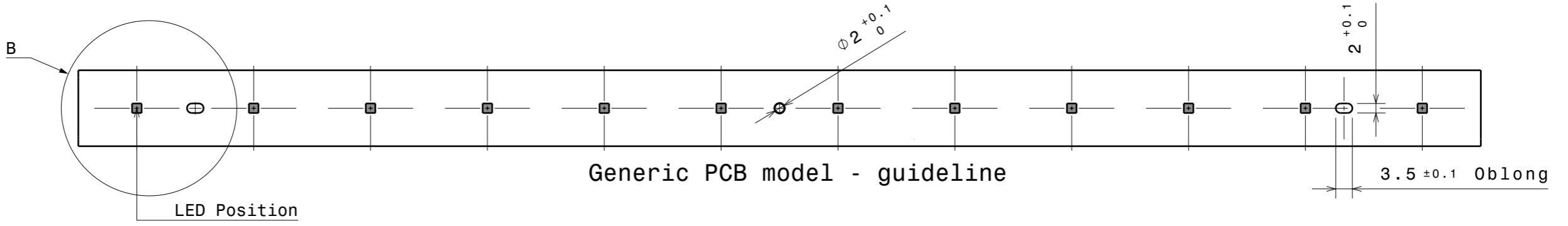
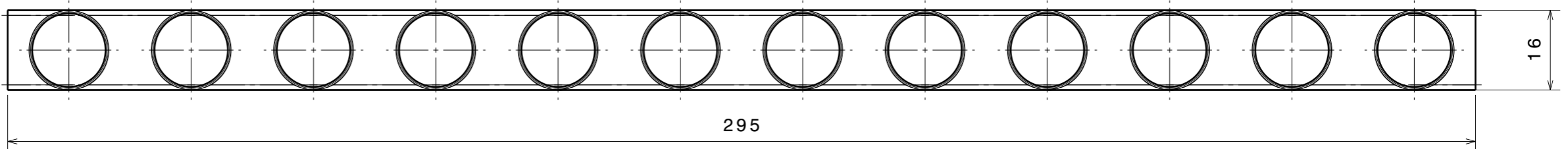
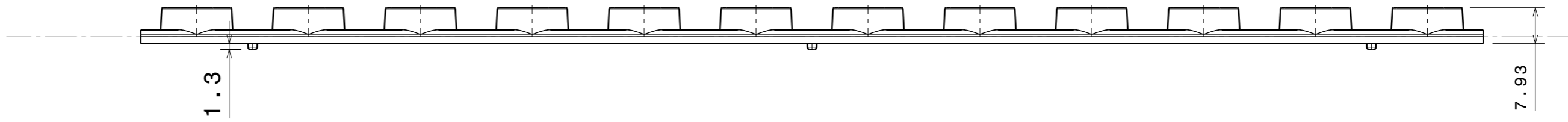
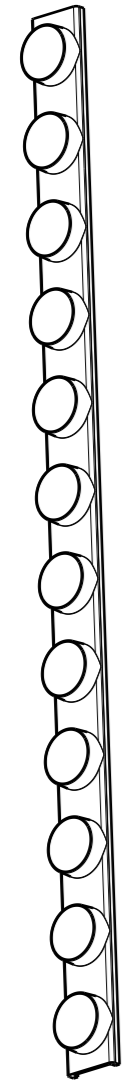
OPTICAL PROPERTIES

LED	Viewing Angle	Light Beam	Efficiency	cd/lm	connector
Oslon Square EC	45+20 degrees		90 %	1.780	-
XP-E	45+18 degrees		88 %	2.100	-
LUXEON Rebel ES	45+21 degrees		89 %	1.800	-
XP-G	46+21 degrees		87 %	1.700	-
XP-G2	46+21 degrees		88 %	1.790	-

H G F E D C B A

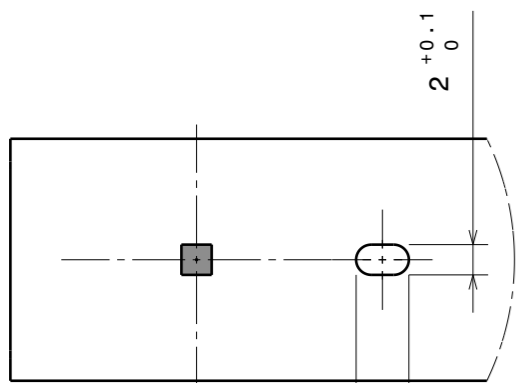


Isometric view
Scale: 1:2

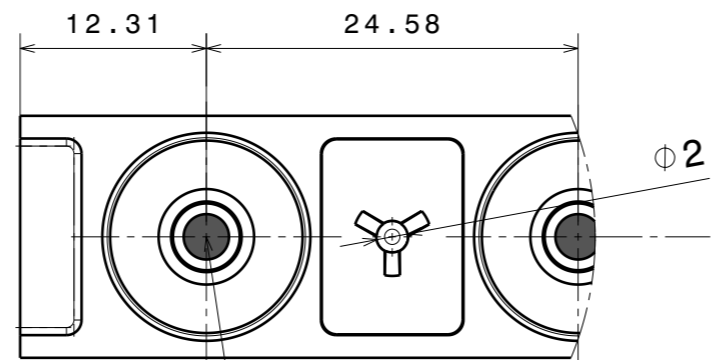


Generic PCB model - guideline

LED Position



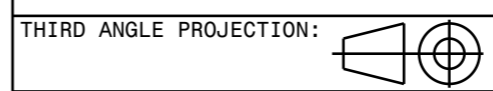
Detail B
Scale: 2:1



Detail A
Scale: 2:1

LED position

Tolerances if not otherwise shown
Linear measures: class M
according to DIN ISO 2768-1
Form and position: class K
according to DIN ISO 2768-2



This drawing is the property of LEDiL Oy. It may not be reproduced, copied or communicated without a written agreement with LEDiL Oy."

INDEX	PART NO	DESCRIPTION	MATERIAL	COLOUR
1	Datasheet	VANESSA	PMMA	Clear

LEDiL LediL Oy
Salorankatu 10
FIN 24240 SALO
Finland

THIRD ANGLE PROJECTION:

DRAWING TITLE
Datasheet_VANESSA

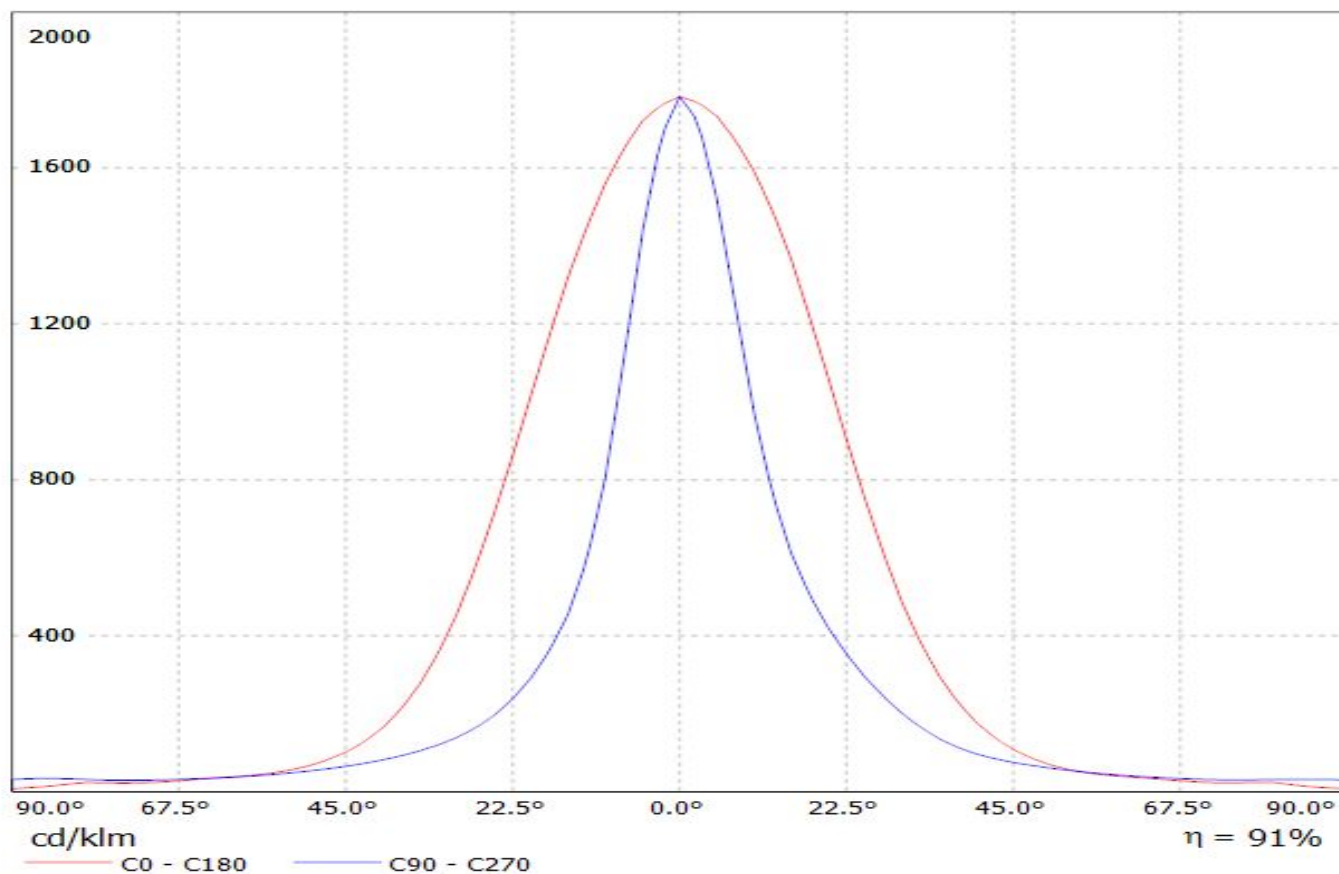
SIZE	PART NUMBER
A3	-

SCALE	1:1	WEIGHT	(g)	SHEET	1/1
-------	-----	--------	-----	-------	-----

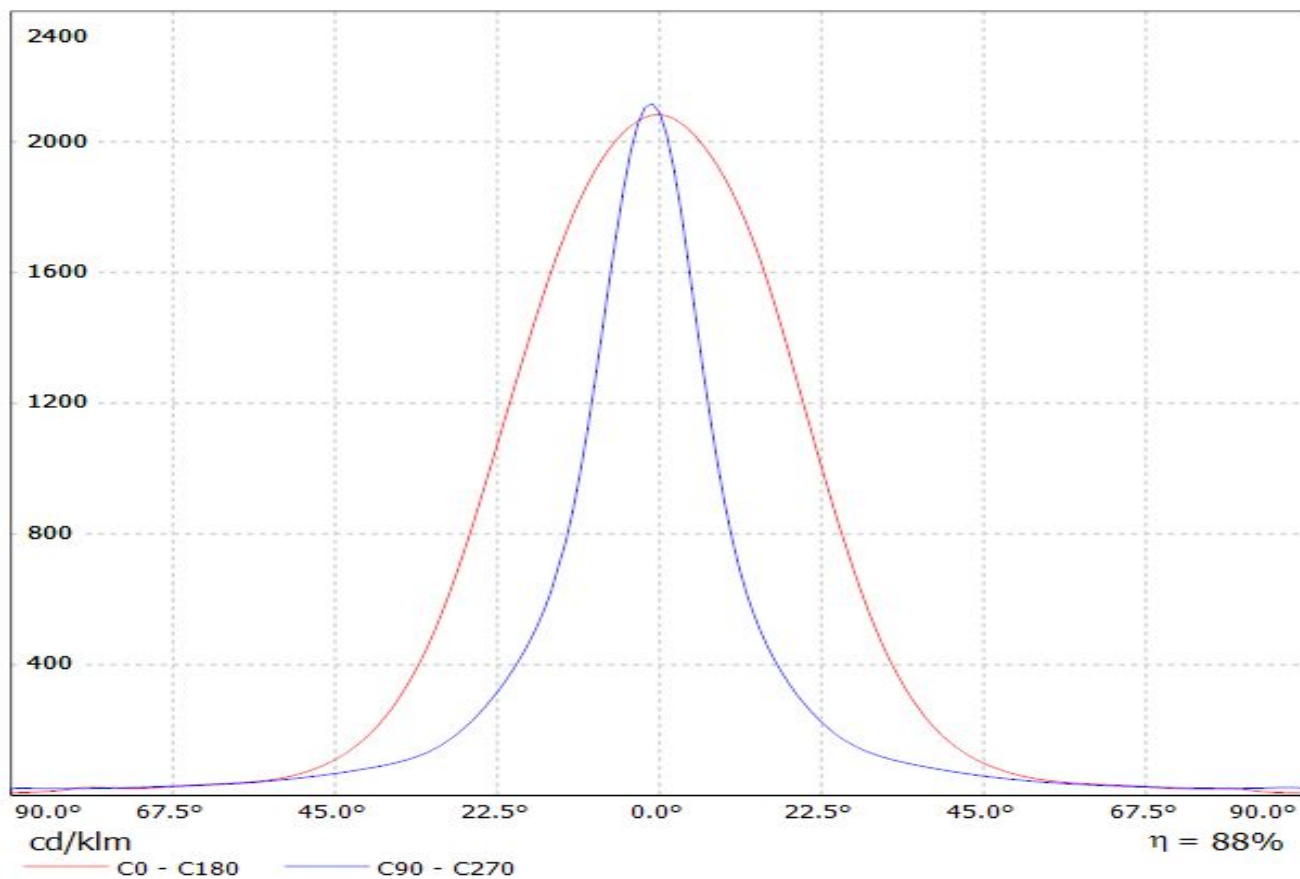
H G B A

Luminaire: LEDiL Oy C13871_VANESSA-B-O (SQ-EC)

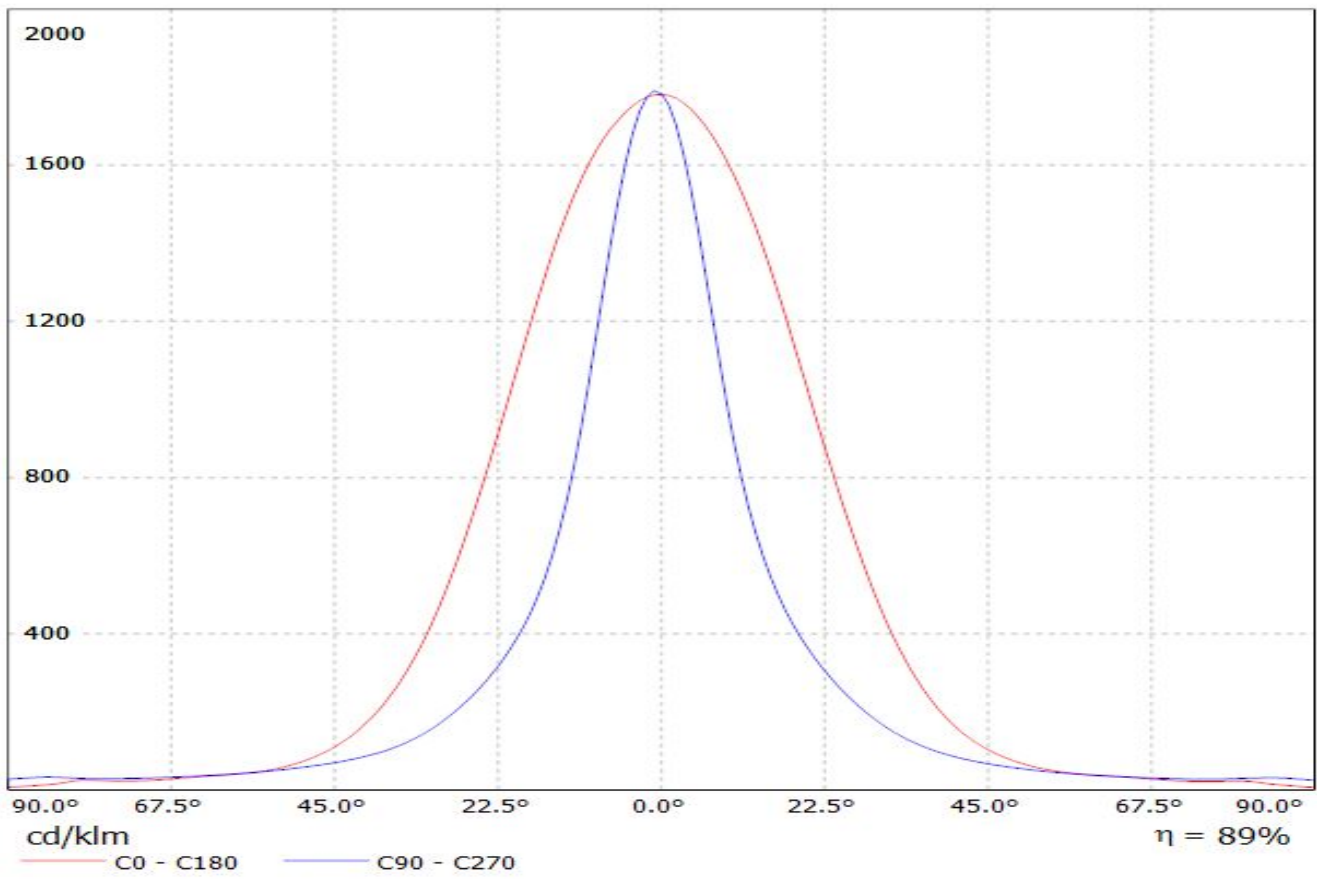
Lamps: 1 x Osram_Square_EC_962.49lm@250mA_P=8.83543W_I=249.8mA



Luminaire: LEDiL Oy C13871_VANESSA-B-O_(XP-E)
Lamps: 1 x CREE_XP-E_12x1 910lm@250mA

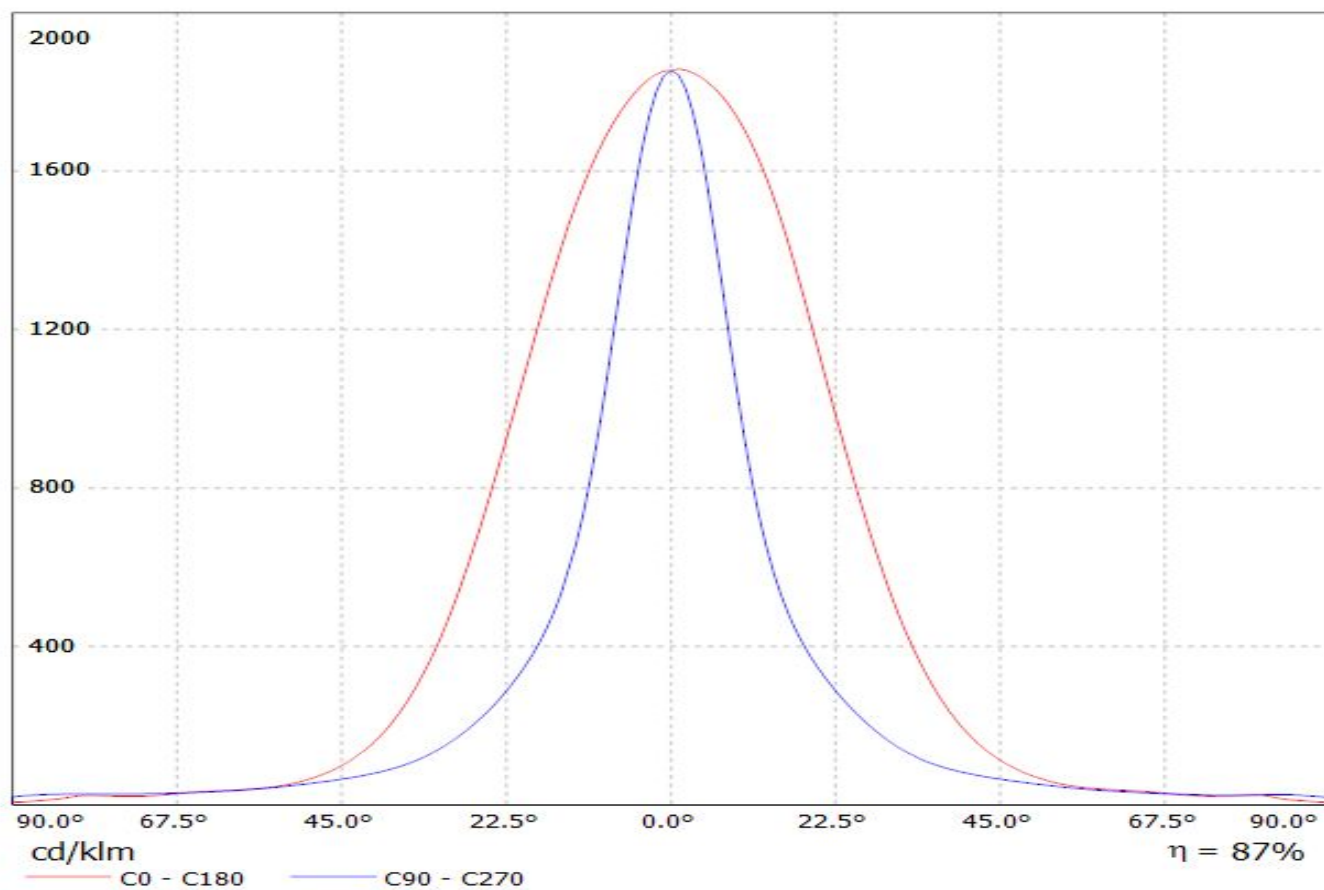


Luminaire: LEDiL Oy C13871_VANESSA-B-O_(REBEL-ES)
Lamps: 1 x REBEL-ES_12x1_811@250mA_P=9.07798W_I=249.8mA

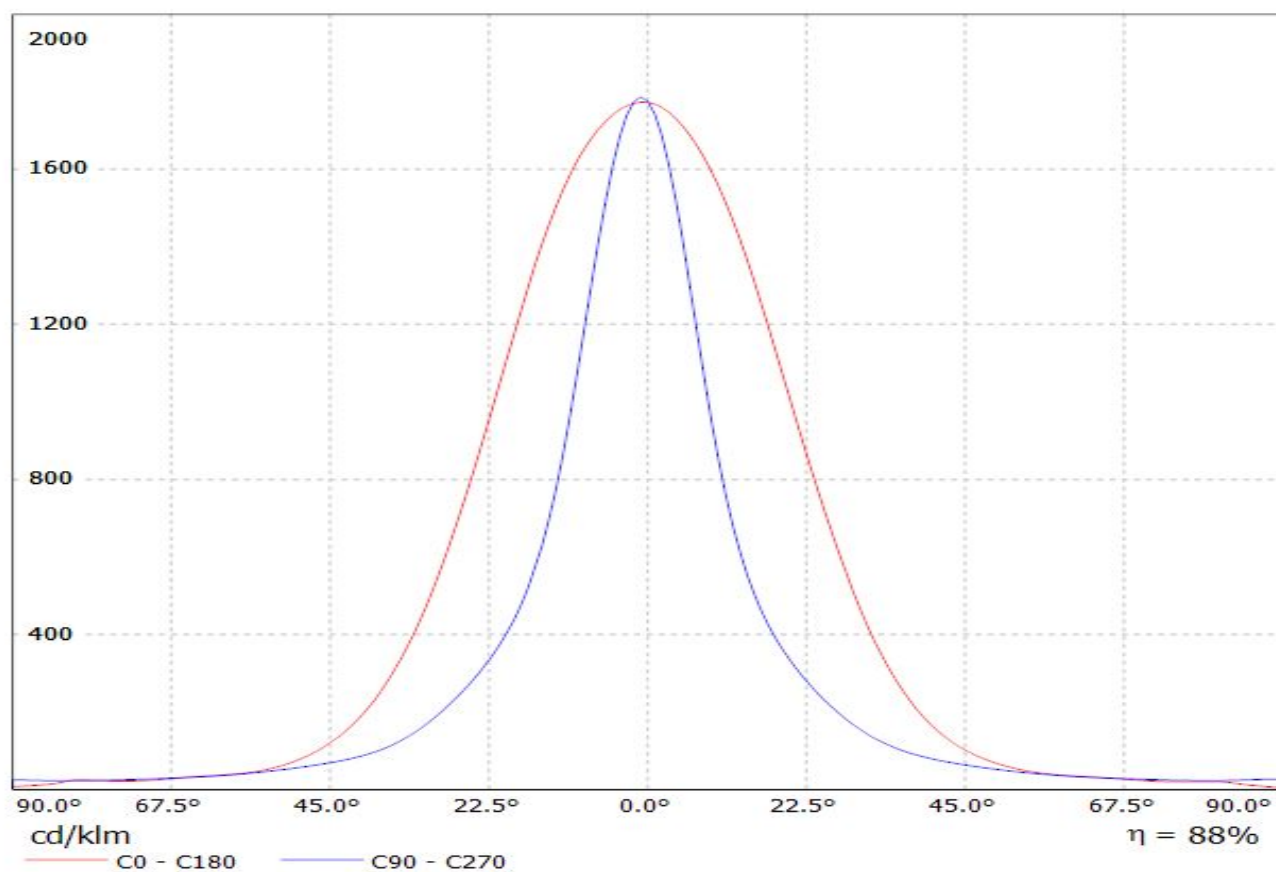


Luminaire: LEDiL Oy C13871_VANESSA-B-O_(XP-G)

Lamps: 1 x CREE_XP-G_(XPGWHT-L1-4C0-R5-0-09)_1113.14lm@250mA_P=8.48621W_I=249.8mA

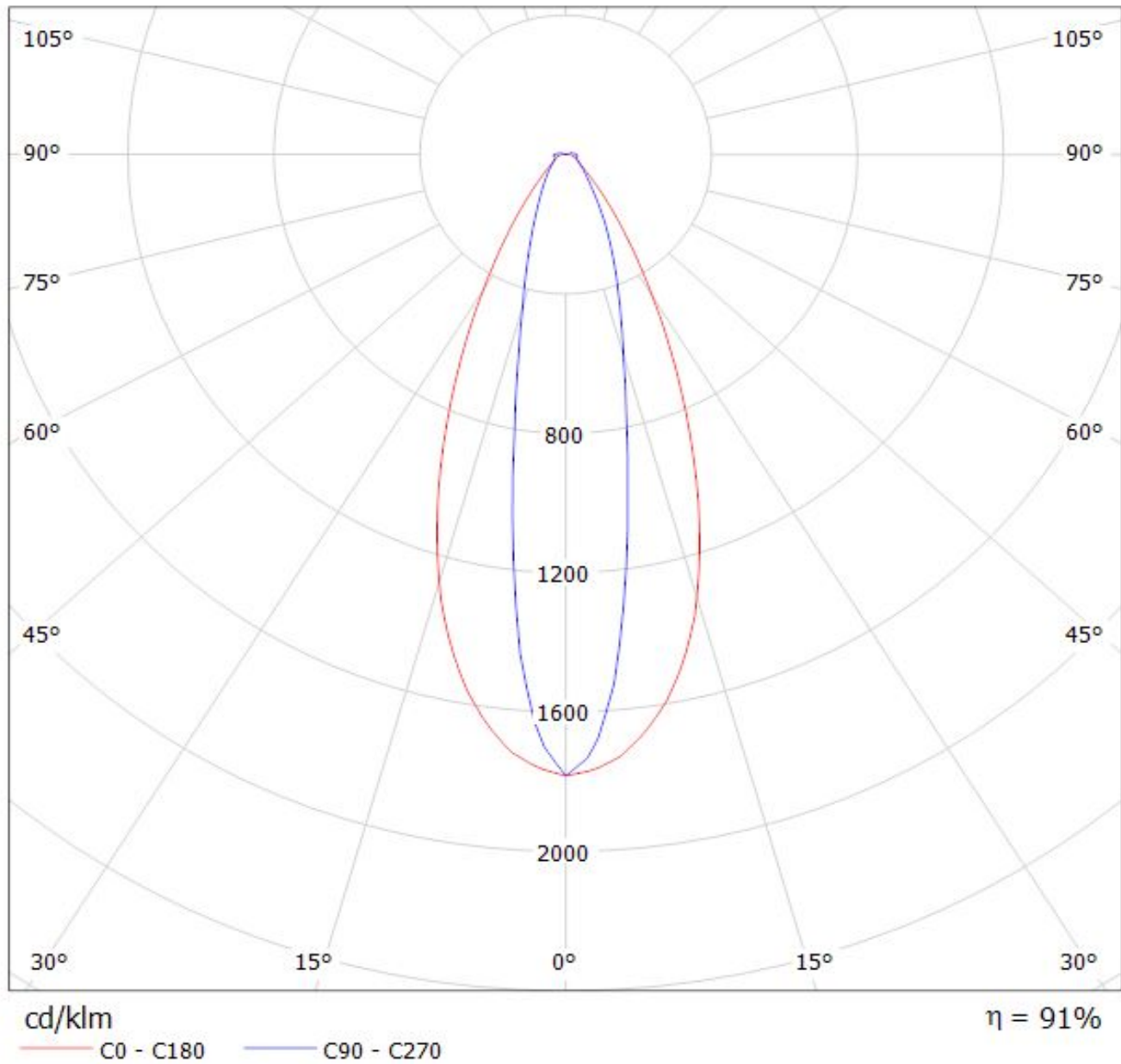


Luminaire: LEDiL Oy C13871_VANESSA-B-O_(XP-G2)
Lamps: 1 x CREE_XP-G2_12x1_1174.06@250mA_P=8.65107_I=249.8mA

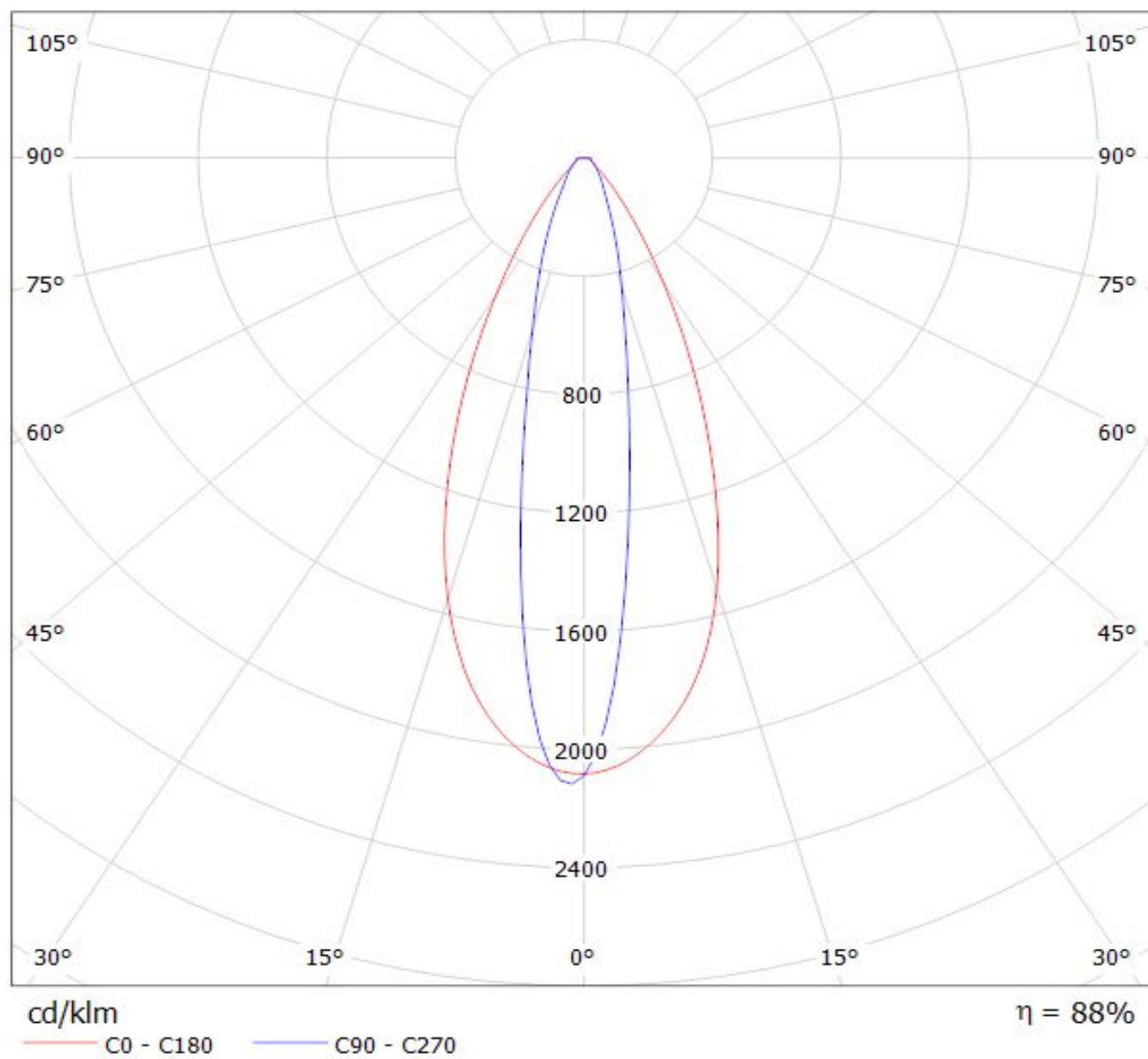


Luminaire: LEDiL Oy C13871_VANESSA-B-O_(SQ-EC)

Lamps: 1 x Osram_Square_EC_962.49lm@250mA_P=8.83543W_I=249.8mA

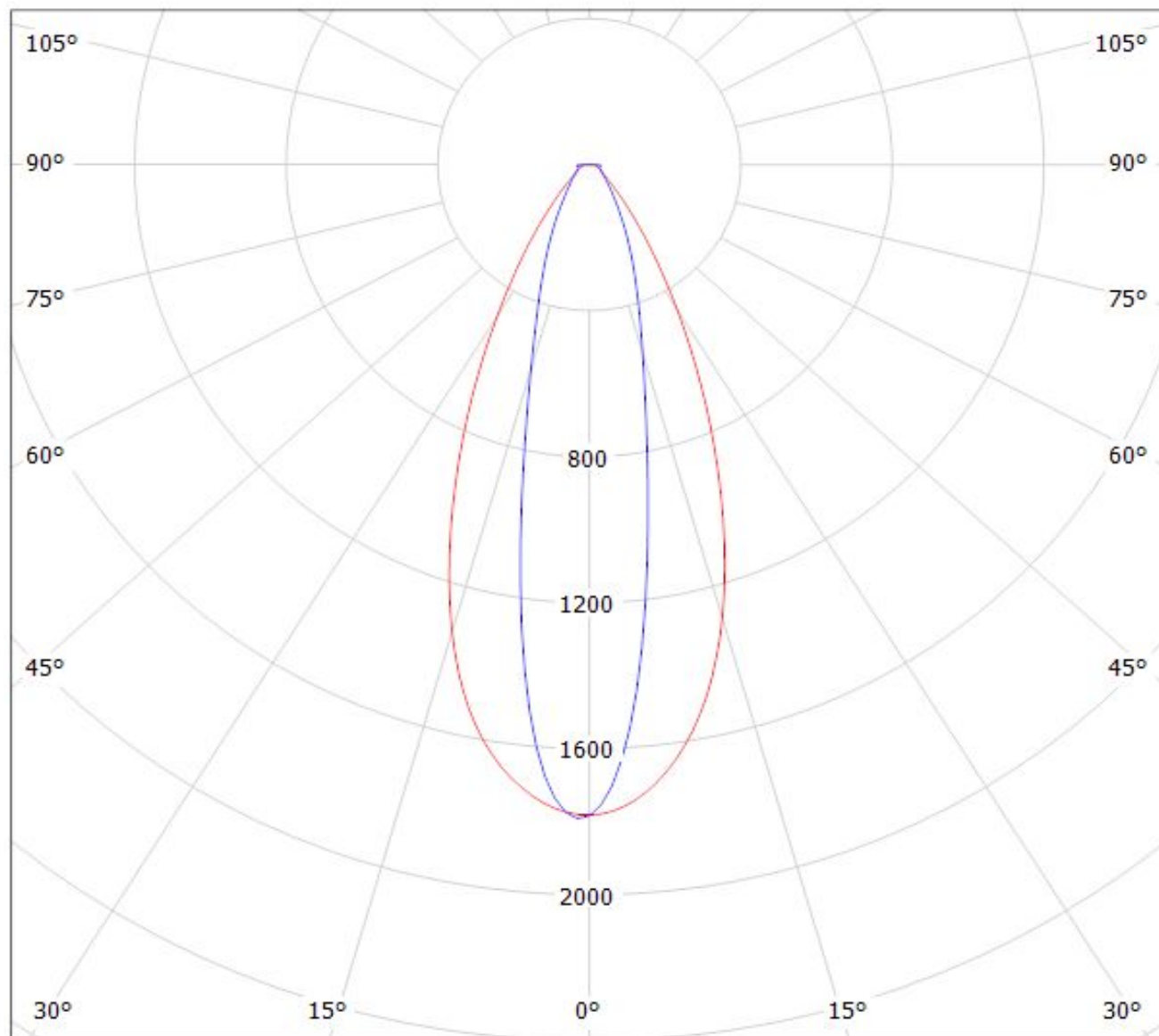


Luminaire: LEDiL Oy C13871_VANESSA-B-O_(XP-E)
Lamps: 1 x CREE_XP-E_12x1 910lm@250mA



Luminaire: LEDiL Oy C13871_VANESSA-B-O_(REBEL-ES)

Lamps: 1 x REBEL-ES_12x1_811@250mA_P=9.07798W_I=249.8mA



cd/klm

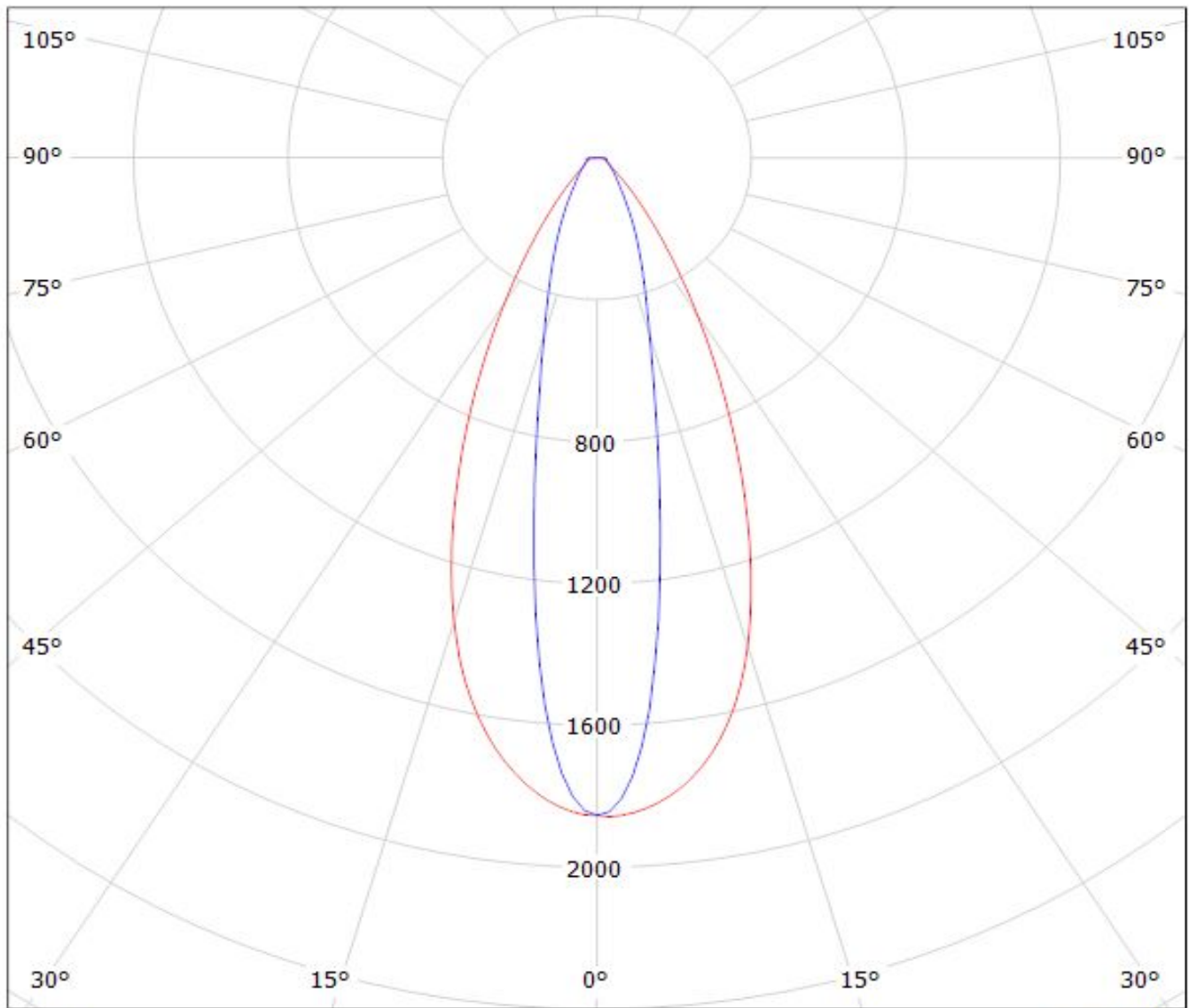
— C0 - C180

— C90 - C270

$\eta = 89\%$

Luminaire: LEDiL Oy C13871_VANESSA-B-O_(XP-G)

Lamps: 1 x CREE_XP-G_(XPGWHT-L1-4C0-R5-0-09)_1113.14lm@250mA_P=8.48621W_I=249.8mA



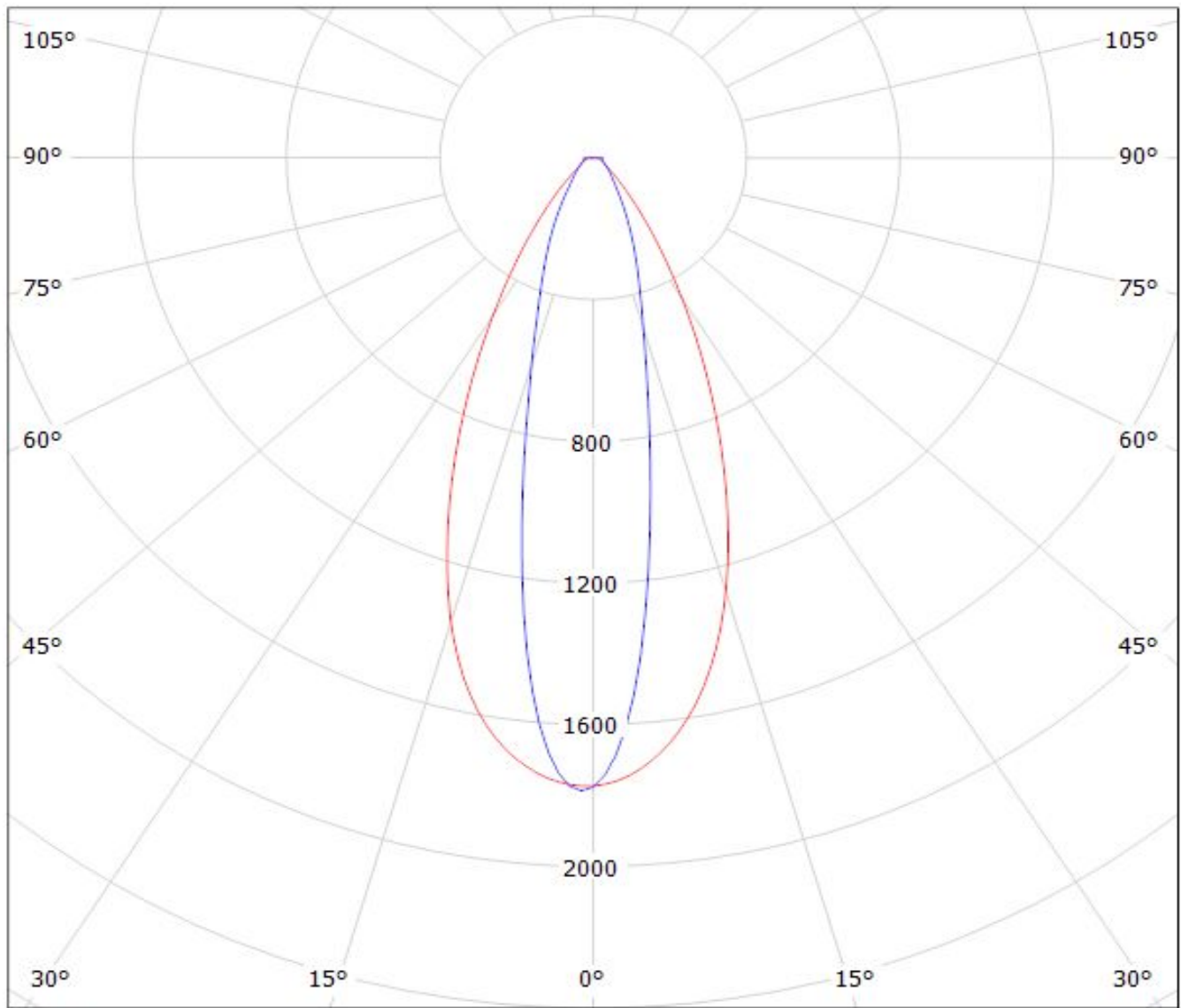
cd/klm

— C0 - C180 — C90 - C270

$\eta = 87\%$

Luminaire: LEDiL Oy C13871_VANESSA-B-O_(XP-G2)

Lamps: 1 x CREE_XP-G2_12x1_1174.06@250mA_P=8.65107_I=249.8mA



cd/klm

— C0 - C180

— C90 - C270

$\eta = 88\%$

NOTE: The typical divergence will be changed by different color, chip size and chip position tolerance. The typical total divergence is the full angle measured where the luminous intensity is half of the peak value.