

# Data Sheet

## LL01CR-CEOxxL02



► LED Solution Provider



CXA1816/1820



## ■ Features & Typical Applications

- High efficiency
- Available with 1 beam angle
- Optimized Uniformity
- Lens without Holder
- Spotlight
- Commercial Lighting

## ■ Table of Contents

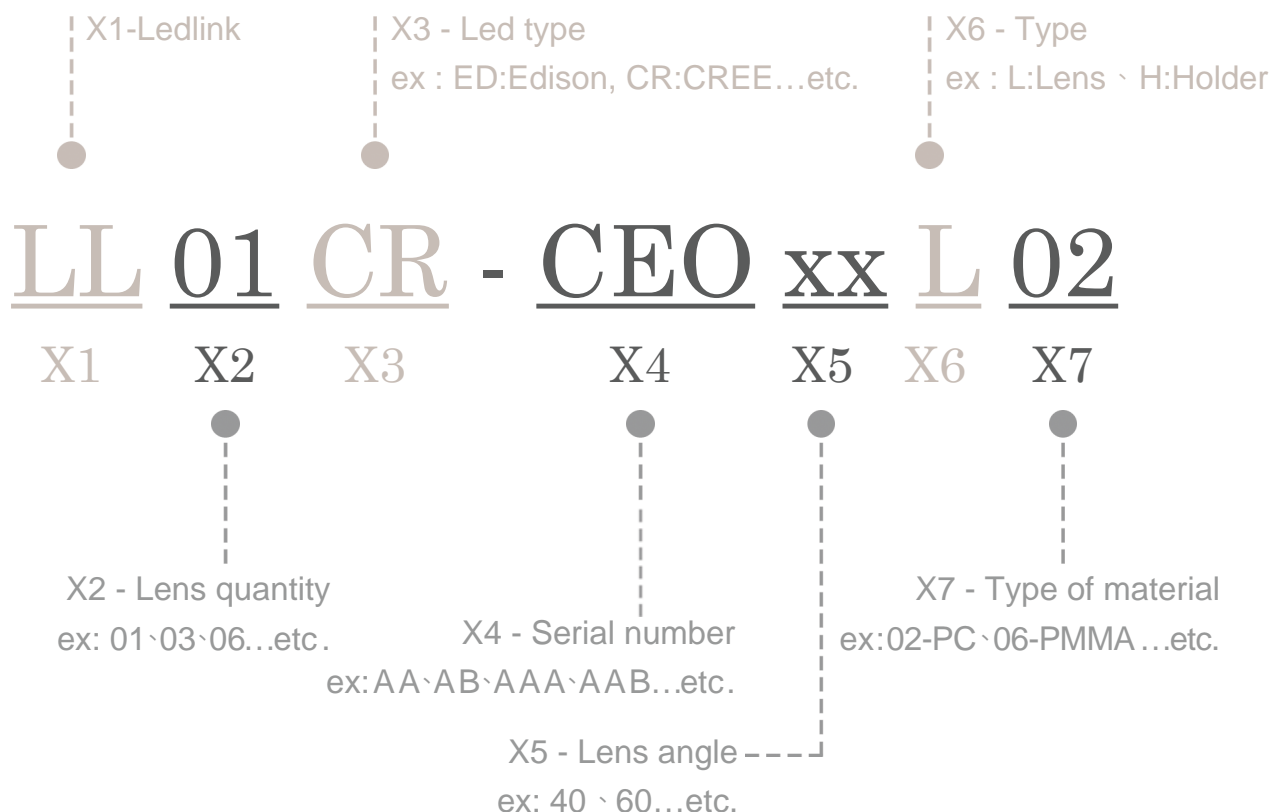
General Information & Product Nomenclature.....	P.2
Optical Specifications .....	P.3
Mechanical Specifications .....	P.4
Package Specifications.....	P.5

# LL01CR-CEOxxL02

## General Information

- Lens Material : PC LEV1700
- Operating Temperature range -40°C~+110°C(upper limit +120°C).
- Storage Temperature range -40°C~+110°C(upper limit +120°C).
  - \* Average transmittance in visible spectrum 400nm~700nm>90%.
- Usage and Maintenance:
  1. If necessary, clean lenses with mild soap, water and soft cloth.
  2. Never use any commercial cleaning solvents on lenses, like alcohol.
  3. Please handle or install lenses with wearing gloves, skin oils may damage lens or its optical characteristic.

## Product Nomenclature



# LL01CR-CEOxxL02 Optical Specifications

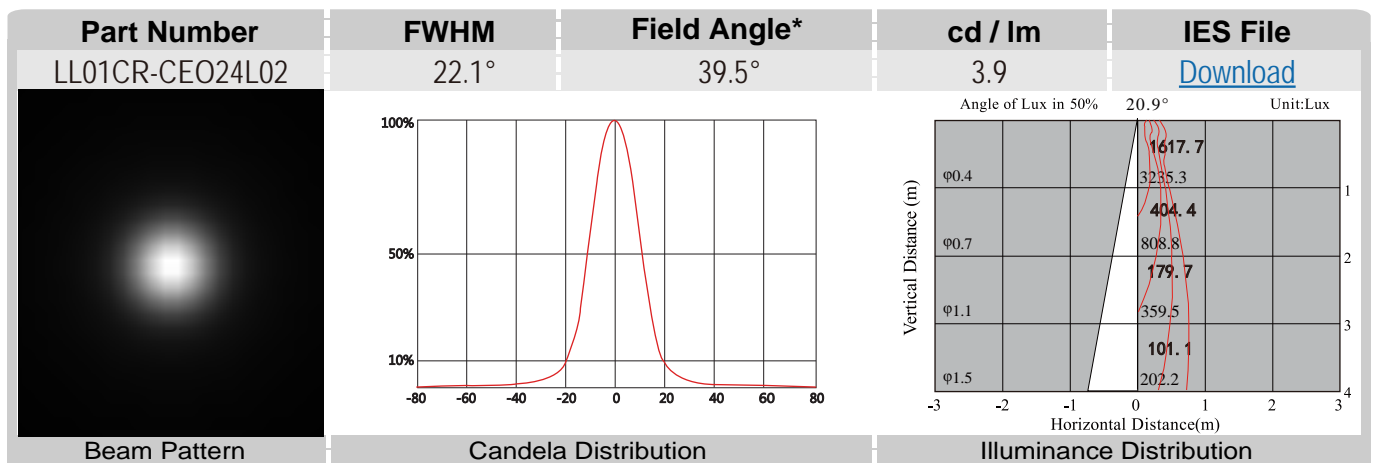
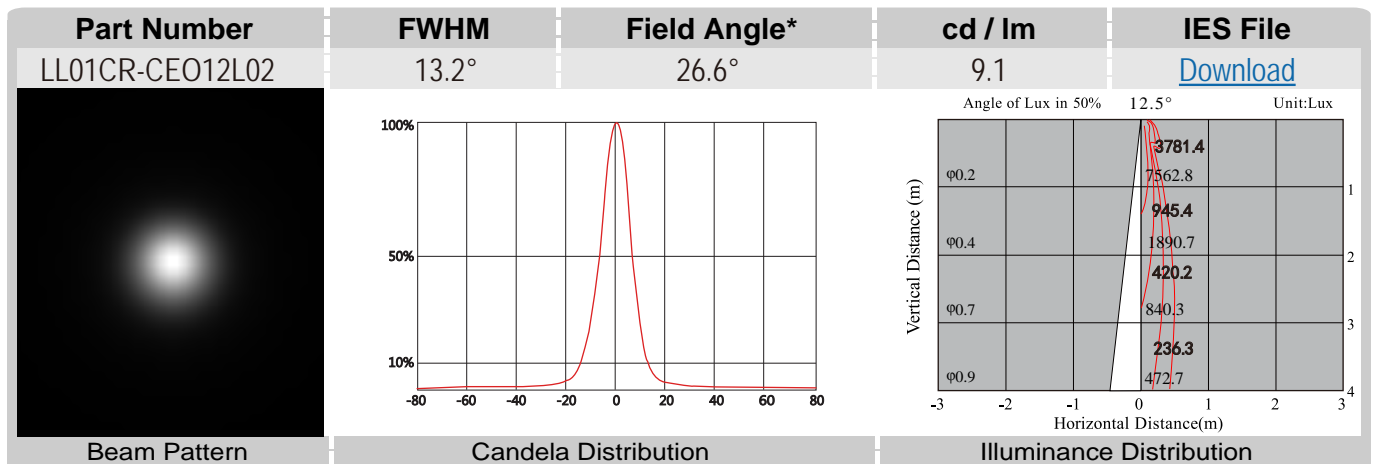


LED Solution Provider



CXA1816/1820

Note: (1) All the results of analysis are based on 0 degrees of elevation.  
 (2) Tolerance:  $\pm 10\%$ .  
 (3) Led Luminous Flux(lm): 826( $\pm 5\%$ ).



\*CEO38 is coming soon.

\*The Field Angle is the angle between the two directions opposed to each other over the beam axis for which the luminous intensity is 10% that of the maximum luminous intensity.

\*This testing result is obtained through testing the popular rank LED samples which provided by the original manufacturer. Hence, the testing results would be varied as the users choose same LED model but different rank.

# LL01CR-CEOxxL02 Mechanical Specification

## 1. Fixing method

☐ Glue

☐ Screw

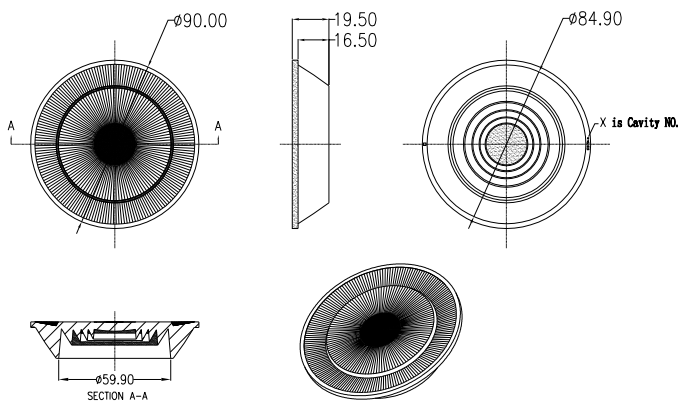
☐ Tape

☐ Fixing-ring

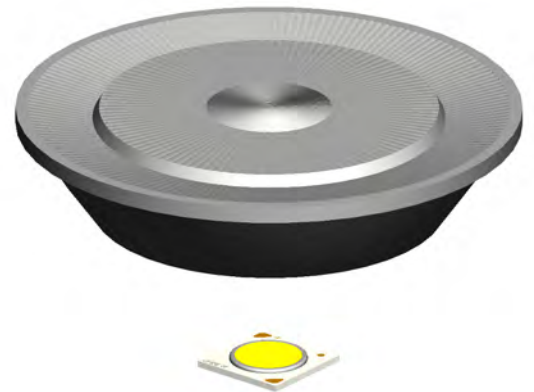
☒ Frame

Note: (1) All dimensions are in mm.  
 (2) All tolerance are  $\pm 0.15$  mm unless otherwise specified.

## 2. Lens dimension

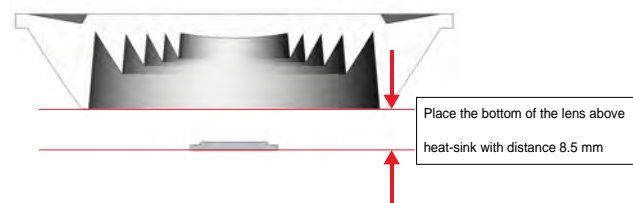


## 3. Lens + Leds assembly instruction



## 4. Connector dimension

## 5. View assembly lens with LED:

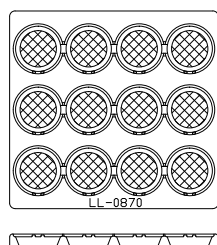




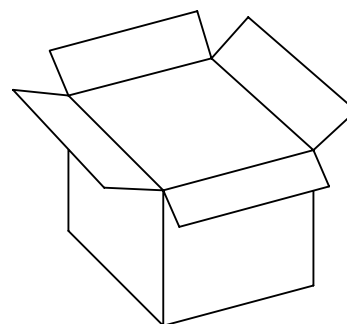
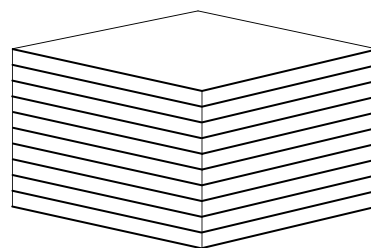
# LL01CR-CEOxxL02

## Package Specifications

Item	Quantity	Total	Size(L*W*H)	G.W
plastic box	12 pcs/plastic box	12 pcs	38*36*3 cm	62g
outer box	7plastic box/outer box	84 pcs	35*31*21 cm	



12 pcs/plastic box



84 pcs/outer box



**Note:**