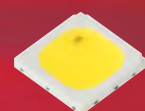
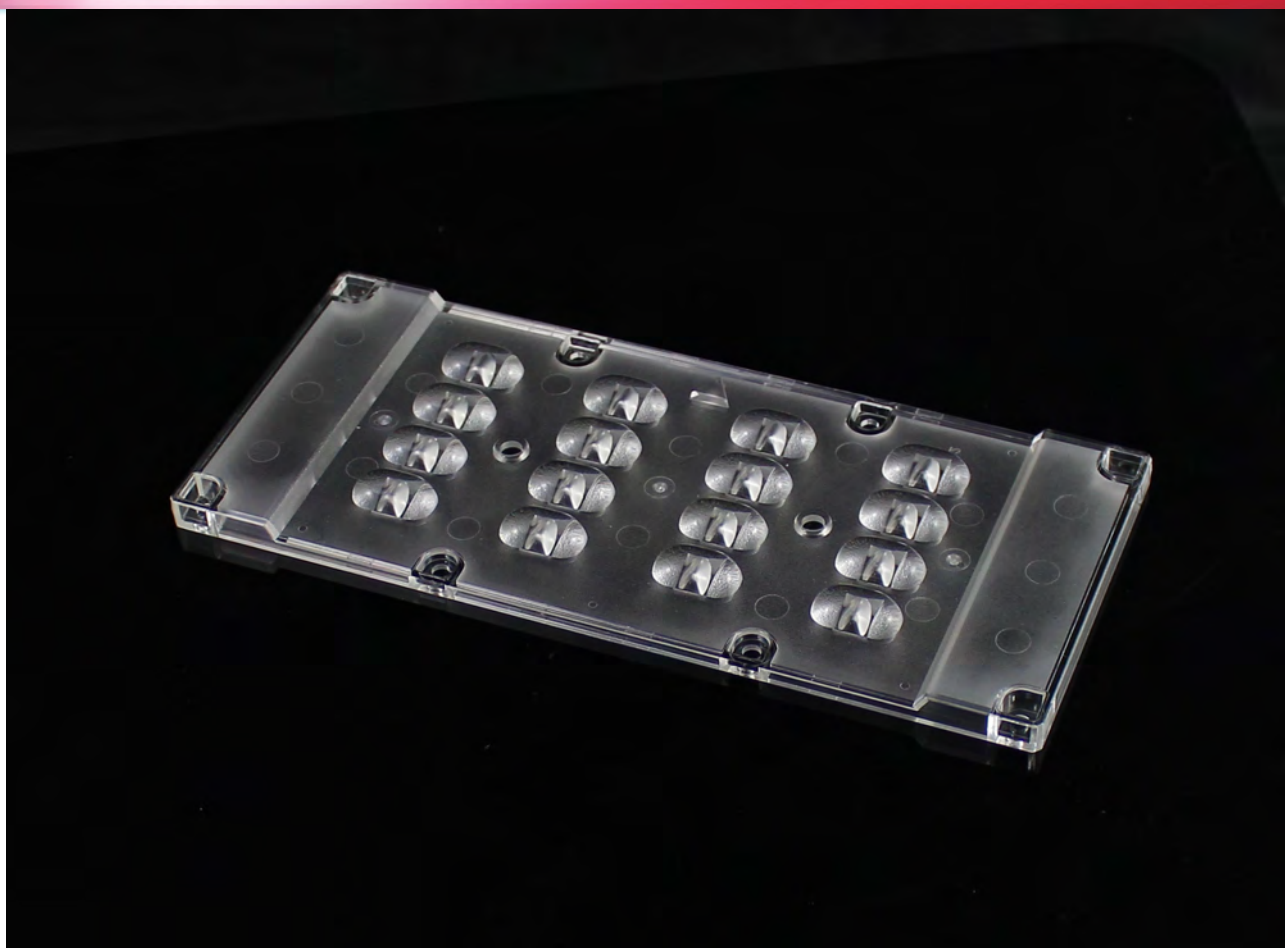


Data Sheet

LL16SE-BQL45145L51



MJT5050



■ Features & Typical Applications

- High efficiency
- Roadway Lighting
- Optimized for uniform effect
- Anti-glare

■ Table of Contents

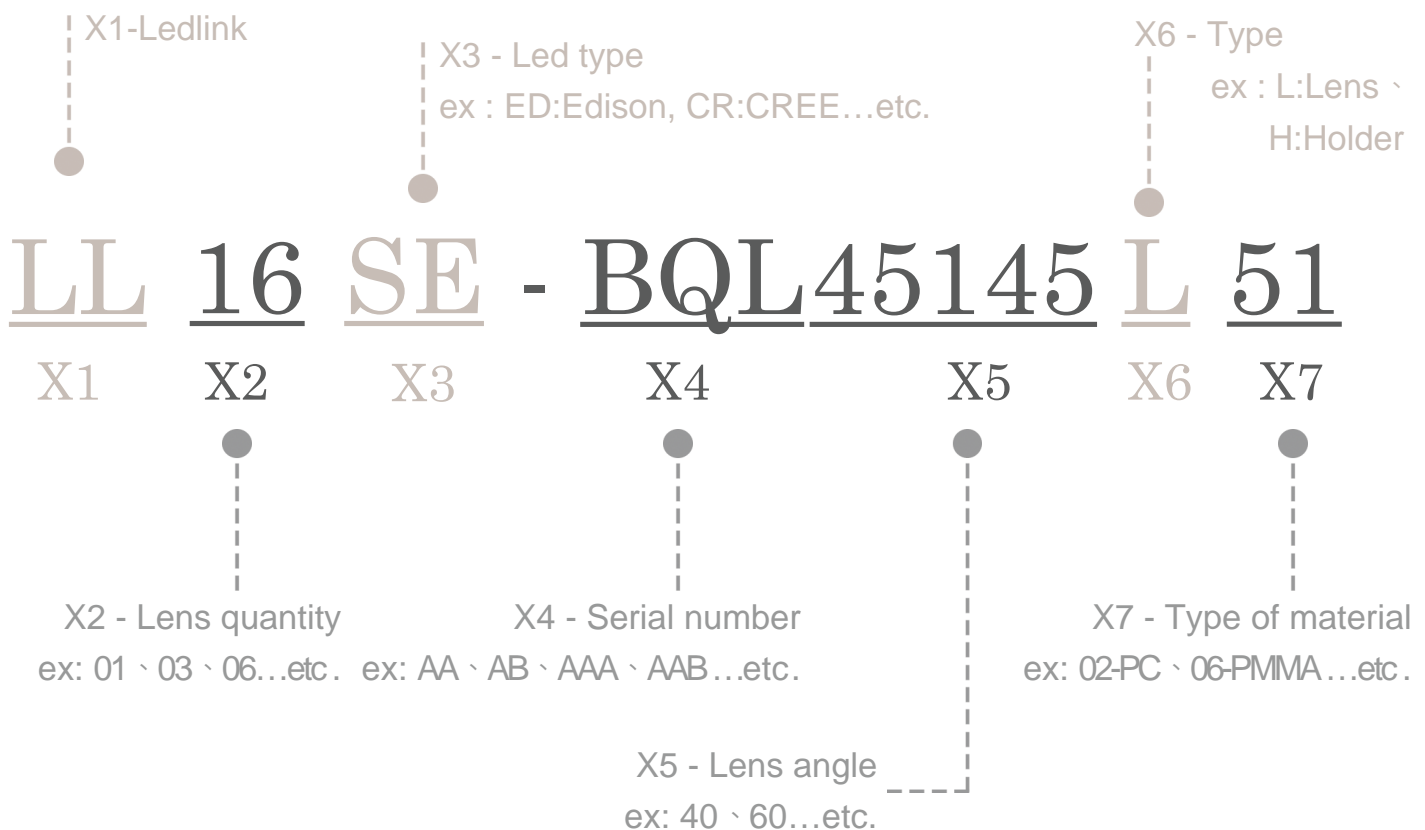
General Information & Product Nomenclature.....	P.2
Optical Specifications	P.3
Mechanical Specifications	P.4
Package Specifications	P.5

LL16SE-BQL45145L51

General Information

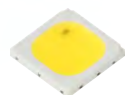
- Lens Material : PC LEV2200KL
- Operating Temperature range -40°C~+110°C(upper limit +120°C).
- Storage Temperature range -40°C~+110°C(upper limit +120°C).
* Average transmittance in visible spectrum 400nm~700nm>90%.
- Usage and Maintenance:
 1. If necessary, clean lenses with mild soap, water and soft cloth.
 2. Never use any commercial cleaning solvents on lenses, like alcohol.
 3. Please handle or install lenses with wearing gloves, skin oils may damage lens or its optical characteristic.

Product Nomenclature



LL16SE-BQL45145L51

Optical Specifications

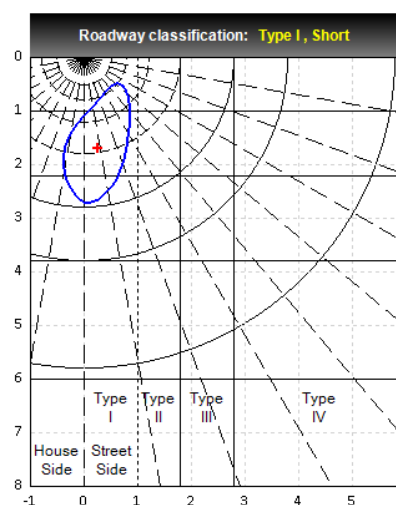
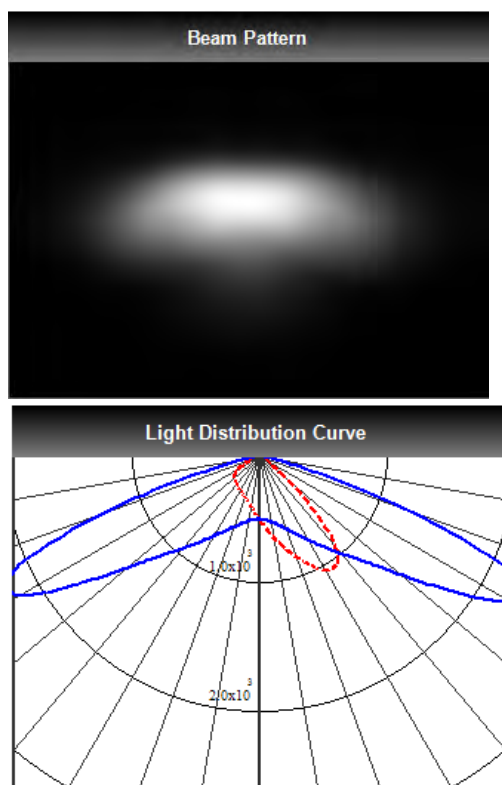


MJT5050

- Note: (1) All the results of analysis are based on 0 degrees of elevation.
 (2) Tolerance: $\pm 10\%$.
 (3) Led Luminous Flux(lm): 2928($\pm 5\%$).

IES File: [Download](#)

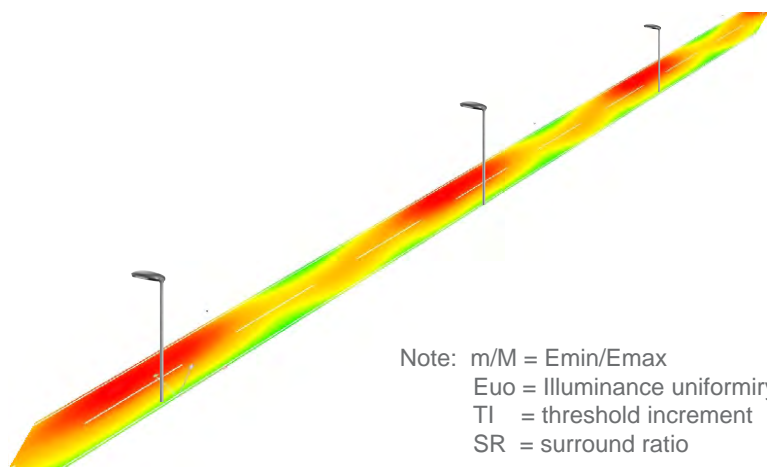
@elevation 0°



Elevation	Roadway Classification
0°	Type I, Short
5°	Type II, Short
10°	Type II, Short
15°	Type II, Short
20°	Type III, Short

DIALux Simulation Result

Analyzed file: [Download](#)



Recommend configuration condition

Height	=	10m
Distance	=	35m
Roadwidth	=	7m
Elevation	=	0degree
Overhang	=	1.0m

Result

m/M	=	0.62
Euo	=	0.77
TI	=	7%
SR	=	0.63

*The results would be similar if the configuration conditions are equally magnified or minified.

*This testing result is obtained through testing the popular rank LED samples which provided by the original manufacturer. Hence, the testing results would be varied as the users choose same LED model but different rank.

*The analyzed file require DIALux v4.12 and above to open.

LL16SE-BQL45145L51

Mechanical Specification

1. Fixing method

☐ Glue

☒ Screw

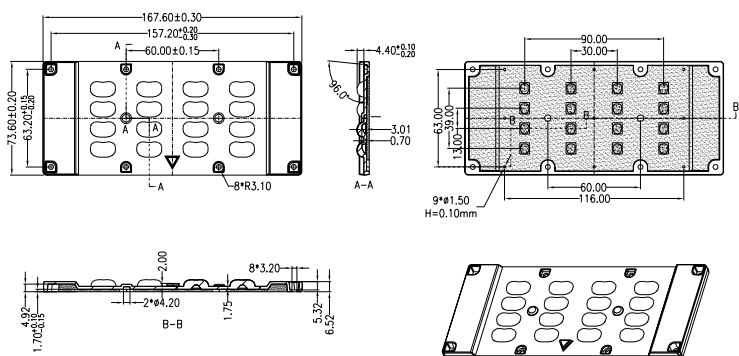
☐ Tape

☐ Fixing-ring

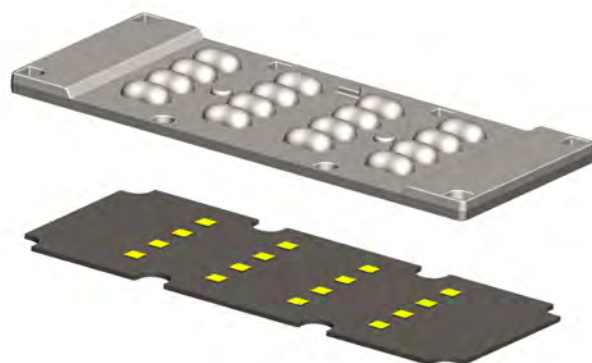
☐ Frame

Note: (1) All dimensions are in mm.
(2) All measurements are ± 0.15 mm unless otherwise indicated.

2. Lens dimension



3. Assembly instruction



4. Rubber dimension

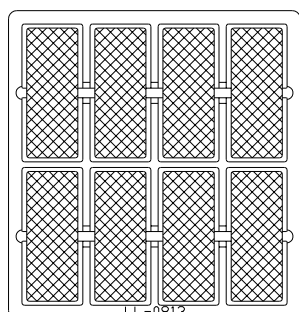
5. View assembly lens with MCPCB:



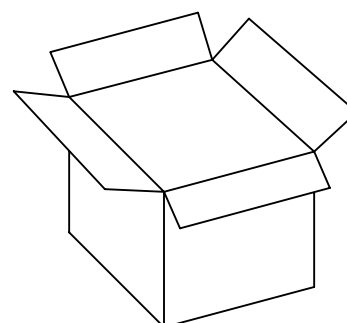
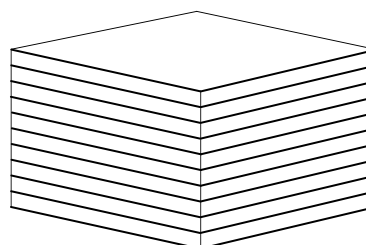
LL16SE-BQL45145L51

Package Specifications

Item	Quantity	Total	Size(L*W*H)	G.W
plastic box	8 pcs/plastic box	8 pcs	38*36*1.5 cm	37.6g
outer box	14 plastic box/outer box	112 pcs	40*37*21 cm	



8 pcs/plastic box



112 pcs/outer box



Note: