



SUNSHINE ELECTRONICS TRADING LIMITED

Part No: SEL-3030-3-6V150



ATTENTION

OBSERVE PRECAUTIONS
FOR HANDLING
ELECTROSTATIC
DISCHARGE
SENSITIVE
DEVICES

1、Features/特 征:

- Emitting Color/发光颜色: White/白色
- Lens Type/封装特性: Yellow Diffused/黄色散射
- Device Outline/外形特征: 3.0×3.0×0.6 (unit:mm)
- HBM ESD:2000V/人体抗静电指标:2000V
- Pb-Free/无铅
- RoHS compliant/符合 RoHS 标准

2、Applications/应 用

2:Automotive interior lighting 汽车室内照明

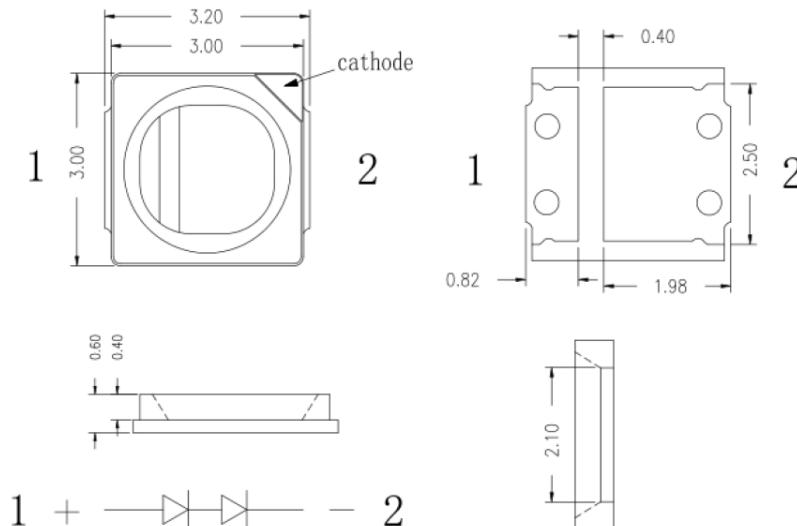
4:Architectural lighting 建筑照明

5:LCD TV / Monitor backlight 液晶电视/显示器背光

8:Decorative/ Pathway lighting装饰/
道路照明

9: Household appliances 家用电器

3、Outline Dimensions/产品外形尺寸:



Notes:

1. All dimensions are in mm 所有尺寸单位为毫米。
2. Tolerance is ± 0.2 mm unless otherwise noted. 非特殊标注, 公差为 ± 0.2 毫米。



SUNSHINE ELECTRONICS TRADING LIMITED

Part No: SEL-3030-3-6V150

4、Absolute maximum ratings/极限参数 (Ta = 25℃):

Parameter 参数	Symbol 符号	Value 参数	Unit 单位
Power Dissipation 损耗功率	Pd	1000	mW
Forward Current 正向工作电流	IFm	150	mA
Reverse Voltage 反向电压	VR	7	V
Pulse Current 正向峰值电流 ^[1]	IFp	200	mA
Operating Temperature 工作温度范围	Topr	- 40 ~ +85	℃
Storage Temperature 储存温度范围	Tstr	- 40 ~ +100	℃
Junction Temperature 结温	Tj	115	℃

Notes/备注: [1]. 0.1ms pulse width, 1/10 Duty. / [1] 脉冲宽度0.1ms, 占空比1/10。

5、Electrical and optical characteristics/光电参数 (Ta = 25℃):

Parameter 参数	Symbol 符号	Test Condition 测试条件	Value 参数 ^[1]			Unit 单位
			Min.	Typ.	Max.	
Forward Voltage 正向电压	VF	IF = 150mA	—	6.2	—	V
Reverse Current 反向电流	IR	VR = 7V	—	—	50	μ A
Color Correlated Temperature 色温	CCT	IF = 150mA	2580	—	7050	K
Luminous Flux 光通量	Φ	IF = 150mA	90	—	140	Lm
color rendering index 显色指数	Ra	IF = 150mA	80	—	—	—
Thermal Resistance ^[2] 热阻	Rthj-s	IF = 150mA	—	30	—	℃/w
Viewing Angle 发光指向角	2 θ 1/2	IF = 150mA	—	120	—	Deg.

Notes/备注: [1] Tolerance 误差: VF: ±0.10V, Φ: ±15%, 其它: ±5%; [2] Thermal Resistance is not measured value, the data is only for reference. / [2] 热阻非实测值, 数据仅供参考。



6、Product Ranks/产品分档范围:

供货型号	电流	光通量(lm)		
ST-303027WEH-6V150	IF=150mA	90-100	100-110	110-120
ST-303030WEH-6V150	IF=150mA	100-110	110-120	120-130
ST-303035WEH-6V150	IF=150mA	100-110	110-120	120-130
ST-303040WEH-6V150	IF=150mA	110-120	120-130	130-140
ST-303050WEH-6V150	IF=150mA	110-120	120-130	130-140
ST-303065WEH-6V150	IF=150mA	110-120	120-130	130-140

电压分档标准	
正向电压VF值(V)	代表符号
IF=150mA	
5.8-6.0	V22
6.0-6.2	V23
6.2-6.4	V24
6.2-6.6	V25

Notes/备注: Rank error/分档误差: VF: ±0.10V, Φ: ±15%



SUNSHINE ELECTRONICS TRADING LIMITED

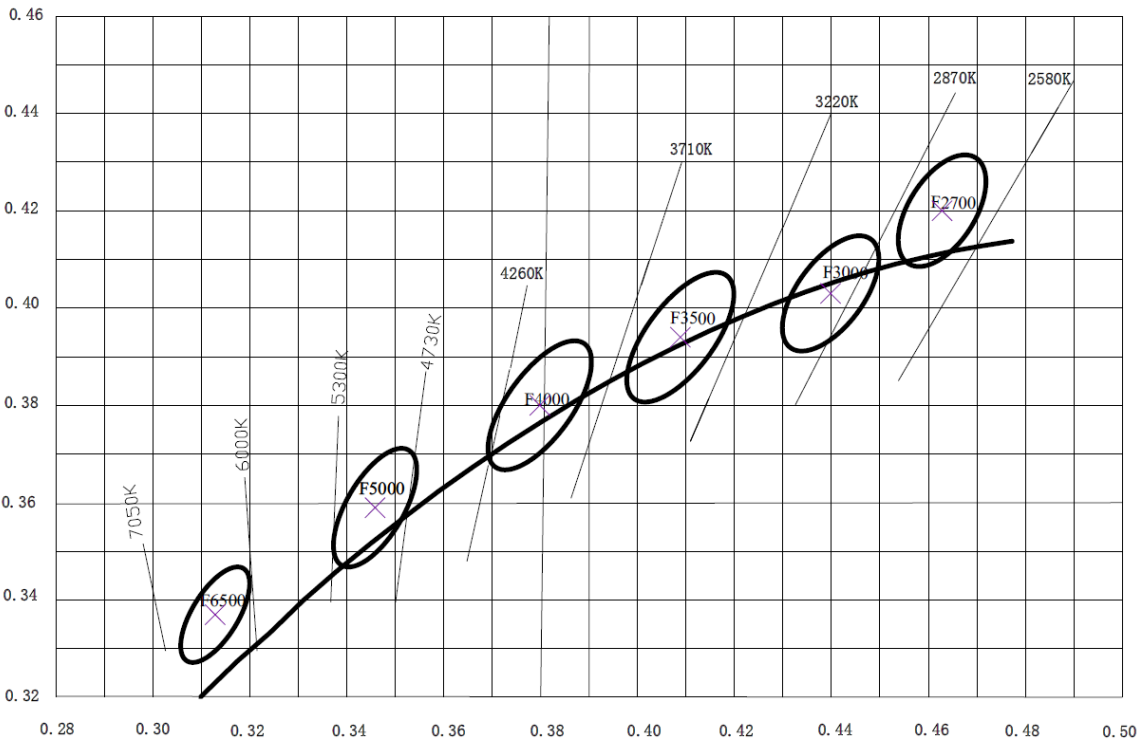
Part No: SEL-3030-3-6V150

色坐标分档:

色坐标误差: ±0.005

代码	轴	参数				代码	轴	参数			
F6500	X	0.3084	0.3140	0.3237	0.3176	F5000	X	0.3374	0.3485	0.355	0.3435
	Y	0.3357	0.3323	0.3478	0.3510		Y	0.3512	0.3702	0.3669	0.3476
F4000	X	0.3705	0.3841	0.3906	0.3777	F3500	X	0.3982	0.4133	0.4205	0.4049
	Y	0.3735	0.3925	0.3878	0.3684		Y	0.3872	0.4066	0.4011	0.3811
F3000	X	0.4300	0.4421	0.4504	0.4381	F2700	X	0.454	0.4654	0.4721	0.4607
	Y	0.3973	0.4143	0.4088	0.3923		Y	0.4135	0.4311	0.4268	0.4089

Diagram





7、Typical electrical/optical characteristic curves/光电特性曲线:

Fig.1 正向电流 Vs. 正向电压

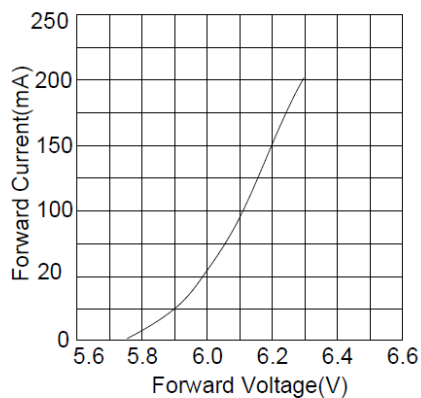


Fig.2 相对亮度 Vs. 正向电流

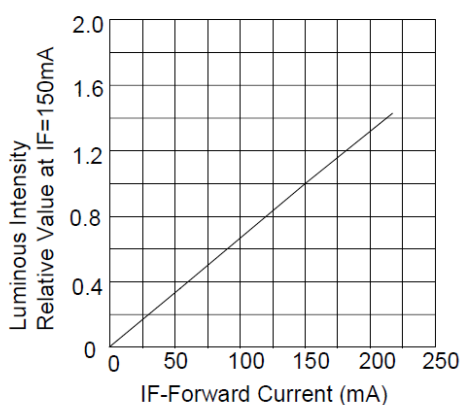


Fig.3 正向电流 Vs. 环境温度

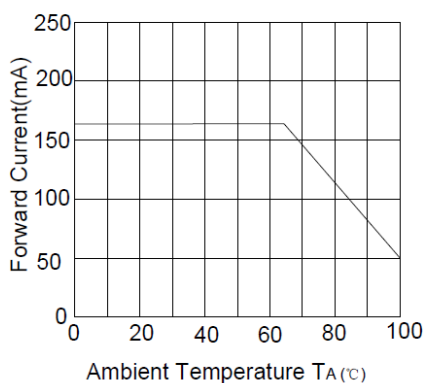
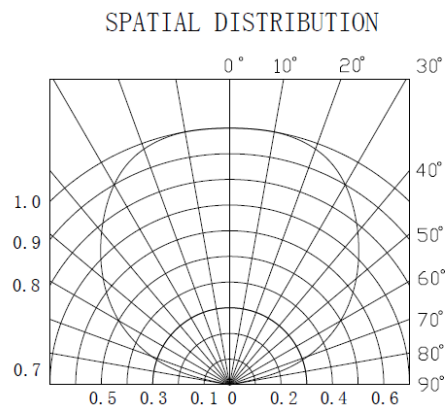
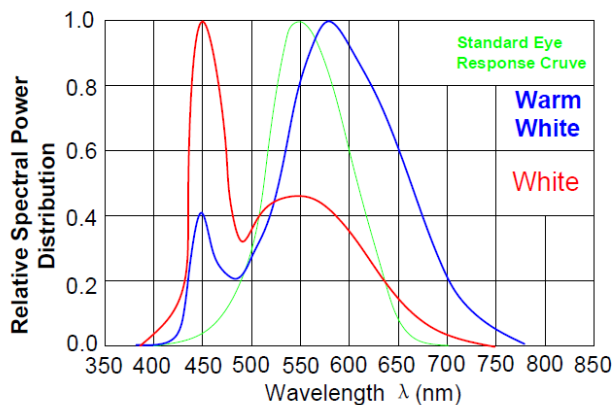
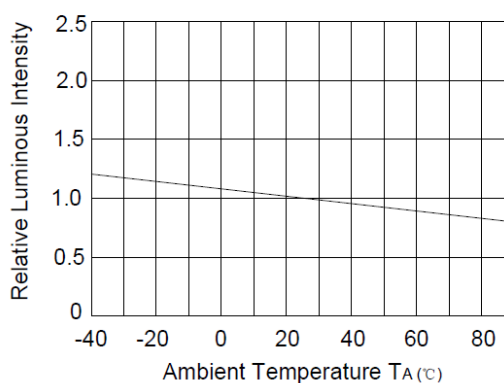


Fig.4 相对亮度 Vs. 环境温度





SUNSHINE ELECTRONICS TRADING LIMITED

Part No: SEL-3030-3-6V150

8、Reliability Analysis/可靠性试验

8.1 Test Items And Results/测试项目和判据

No.	Item/项目	Test Condition/测试条件	Spec. / 引用标准	Q'ty/ 数量	Time/ 时间	Standard/ 判定
1	IR Reflow (Reflow Soldering) 回流焊接	Tsld=260℃ T=10sec	JESD22-B106	20	3times	ALL PASS
2	Solder ability 可焊性	Tsld=235±5℃, 3sec	JESD22-B102	20	1times Over 95%	ALL PASS
3	Temperature Cycle 高低温循环	100℃ 30mins ↑↓5mins -40℃ 30mins	JESD22-A104	20	100cycles	ALL PASS
4	High Temperature High Humidity 高温高湿	85℃/85%RH	JESD22-A118	20	168hrs	ALL PASS
5	High Temperature Storage 高温储存	Ta=100℃ (-0/+10℃)	JESD22-A103	20	1000hrs	ALL PASS
6	Low Temperature Storage 低温储存	Ta=-40℃ (-10℃/+0)	JESD22-A119	20	1000hrs	ALL PASS
7	Steady State perating Life 电耐久性	Ta=25℃±5℃ IF=150mA	JESD22-A108	20	1000hrs	ALL PASS

8.2 Criteria For Judging Damage/判断标准

Item/项目	Symbol/ 符号	Test conditions /测试条件	Criteria for Judgement /判断标准	
			Min./最小值	Max./最大值
Luminous Intensity/亮度	Iv	IF=150mA	L.S.L *0.7	/
Forward Voltage/正向电压	VF	IF=150mA	/	U.S.L*1.1
Reverse current/反向电流	IR	VR=7v	/	U.S.L*2

*U.S.L.: Upper Standard Level / 上限

*L.S.L.: Lower Standard Level / 下限

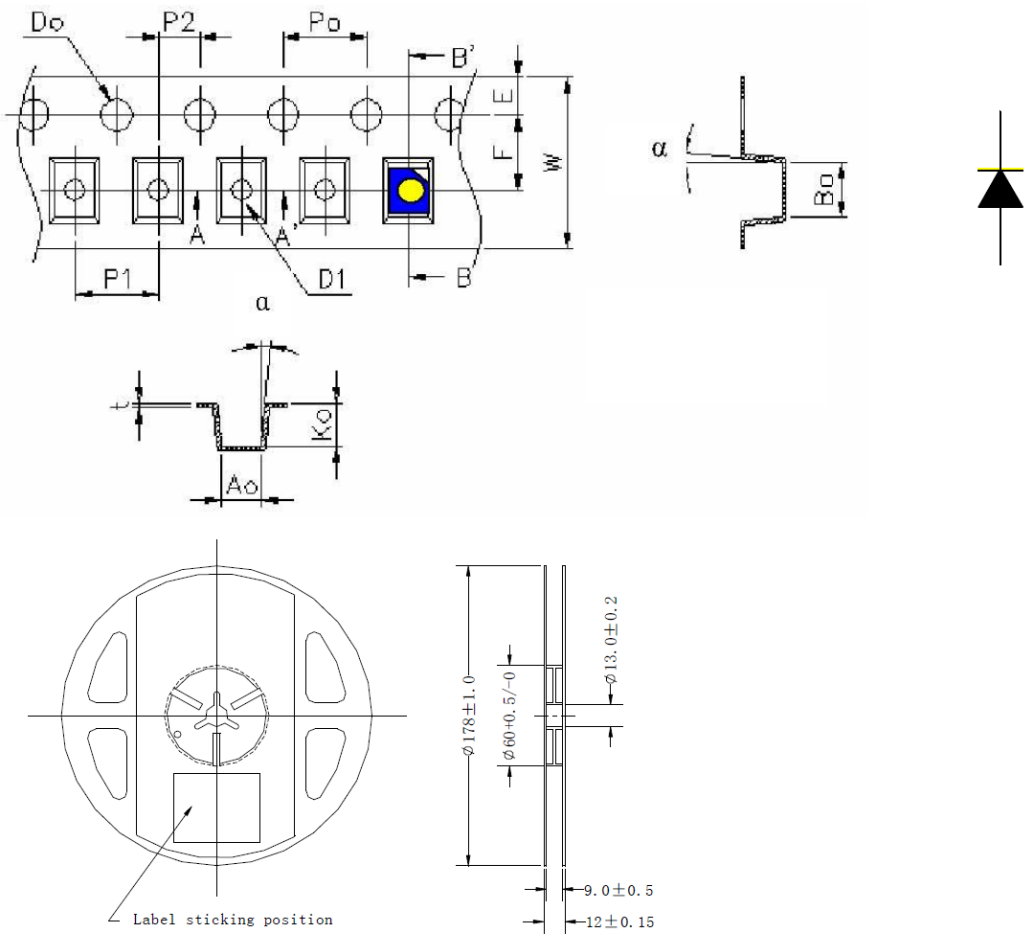


9、Specification of Packing /包装规格

9.1 Taping and Orientation/编带和方向

Quantity/数量：4000units/reel

Diameter/直径：178 mm



Item/项目	Spec/数值	Tol.(+/-)/误差	Item/项目	Spec/数值	Tol.(+/-)/误差
W	8.00	±0.10	P2	2.00	±0.1
E	1.75	±0.10	T	0.20	±0.05
F	3.50	±0.010	A0	3.17	±0.10
D0	1.5	±0.1	B0	3.2	±0.10
D1	1.0	±0.1	K0	1.1	±0.10
P0	4.00	±0.1	α	Max 5°	