

## Cree LED Product Change Notification

**Customer Name:** All Cree LED Customers

**PCN Number:** CreeLED-PCN-5037

**Date Issued:** 01-Mar 2021

This Product Change Notification (PCN) is to advise all customers of the new company name and logo resulting from the sale of Cree's LED business to SMART Global Holdings, Inc. There are no product changes associated with this PCN.

Separate notifications have been sent by Customer Service to all customers and distributors regarding other required changes, including new supplier account, accounting and banking information, purchase orders, payment information, and EDI transactions. Questions outside the scope of this PCN should be directed to the Cree LED Customer Service team.

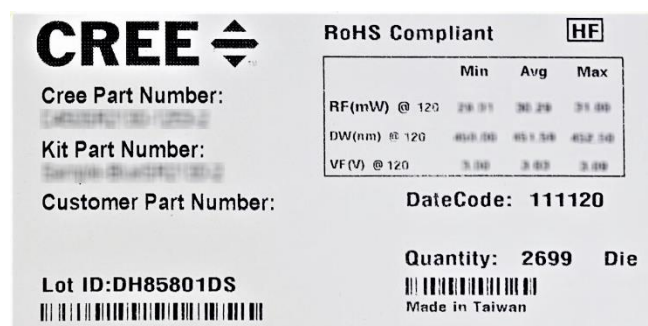
### Description of the Change

Marking and Packaging changes are underway and will be implemented as a running change for all package markings, product markings and product labeling, as well as printed and electronic documents. Existing materials will be consumed during this changeover. All occurrences of the company name, address and logo will be updated. The new labeling and marking will include one of the following Cree LED logos:

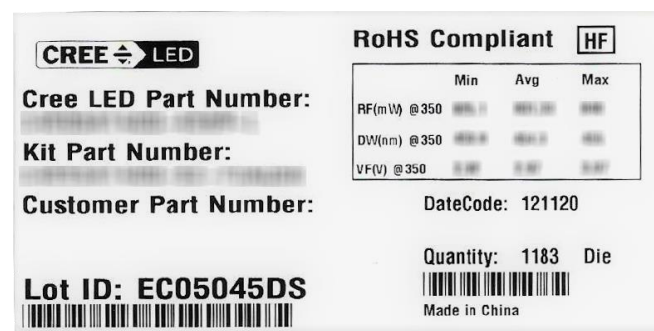


Labeling and packaging examples:

From:



To:



From:



To:



## Reason for the Change

This change is being implemented as part of the transition plan resulting from the sale of the Cree, Inc. LED business unit to SMART Global Holdings, Inc. The new company name is CreeLED, Inc.

## Change Impact on Fit, Form, Function, or Reliability

None, there are no product Fit, Form, Function or Reliability changes associated with this PCN. Products, packaging, labels and documents currently marked with CREE or the Cree logo will be moved to “Cree LED” and the new Cree LED logo.

## Affected Products

All products from all Cree LED product lines, including XLamp®, High Brightness, LED Chips and J Series® are being transitioned.

## Qualification Summary

This is a marking and labeling change only, no qualification is required or planned.

## Implementation Plan

Cree LED has begun implementing the change for product markings, product packaging, labels and documentation. Internally printed labels and documents will be converted immediately. Pre-printed packaging, labels and product markings will be phased in as existing stocks are depleted. Shipments with the new company name and logo will begin on or after 01-Mar 2021 based on inventory levels. Shipments may contain a mixture of marked products during this transition period.

## Cree LED Contact Information

If you have any questions regarding this PCN please contact:

<b>Cree LED Contact:</b>	<b>Cree LED Customer Service</b>
<b>Cree LED Contact E-Mail:</b>	<a href="mailto:xlampsales@cree-led.com">xlampsales@cree-led.com</a>
<b>Cree LED Contact Phone:</b>	US toll free: 1-844-273-3533 Outside the US: +1 919-313-5301
<b>Address:</b>	CreeLED, Inc. 4400 Silicon Dr Durham, NC 27703-8475 USA